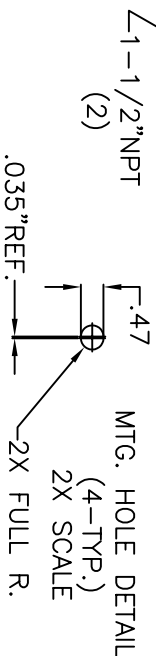
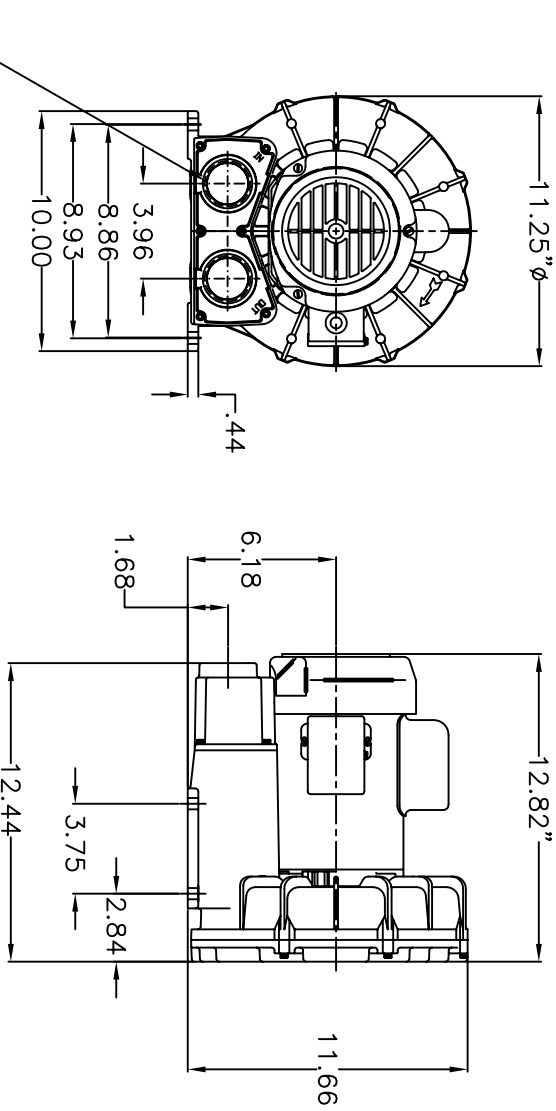


MAX. PRESSURE— 52"H₂O (60Hz), 38"H₂O (50Hz)
 MAX. AIR FLOW— 92 CFM (60Hz), 75 CFM (50Hz)

MOTOR ENCLOSURE: TEFC

HP/kw:	60Hz	50Hz
VOLTAGE:	60Hz 115/208-230-1	50Hz 110/220-240-1
AMPS:	60Hz 9.8/5.2-4.9	50Hz 9.0/4.5-5.7
STARTING AMPS:	60Hz 31.2 @ 230V	50Hz 34 @ 220V

INSULATION CLASS: B
 RECOMMENDED NEMA STARTER SIZE: 0/00
 NET WEIGHT(lbs/kg): 41/18,6



REV.	DATE	REVISION	BY
TOLERANCES UNLESS OTHERWISE NOTED			
±.005 .000			
±.015 .00			
FRACTIONAL			
±1/64			
ANGULAR ±1°			

QAC CONVERTER ACCESSORY CORP. WIND GAP, PA

TITLE: MODEL #300G REGENERATIVE BLOWER
 DRAWN BY: MJT SCALE: 1/8"=1"
 DATE: 1-21-05
 DWG. NO.: 20222-51 DISK FILE: MEPROJ

CUSTOMER: CUSTOMER SQ#: DATE:

THESE DRAWINGS AND SPECIFICATIONS CONTAIN INFORMATION PROPRIETARY AND CONFIDENTIAL. NO PORTION OF THIS DRAWING MAY BE REPRODUCED OR COPIED WITHOUT PRIOR WRITTEN PERMISSION OF CONVERTER ACCESSORY CORPORATION.