

MAX. PRESSURE— 52"H₂O (60Hz), 38"H₂O (50Hz)
 MAX. AIR FLOW— 92 CFM (60Hz), 75 CFM (50Hz)

MOTOR ENCLOSURE: TEFC

HP/kw: 60Hz 1.0/0.75
 50Hz .6/0.45

VOLTAGE: 60Hz 208-230/460-3
 50Hz 190-220/380-415-3

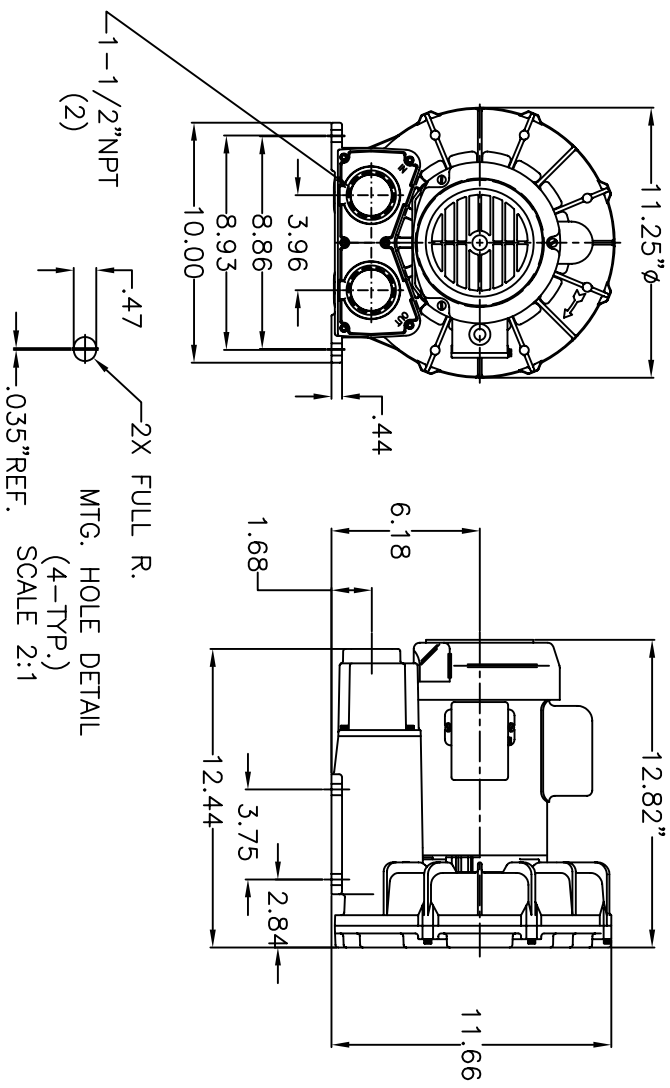
AMPS: 60Hz 3.4-3.2/1.6
 50Hz 2.6-3.3/1.3-1.4

STARTING AMPS: 60Hz 26.5 @ 230V
 50Hz 28.4 @ 220V

INSULATION CLASS: B

RECOMMENDED NEMA STARTER SIZE: 00/00

NET WEIGHT(lbs/kg): 41/18,6



| REV. | DATE | REVISION | BY |
|-----------------------------------|------|-----------------|----|
| | | FINISH REQUIRED | |
| TOLERANCES UNLESS OTHERWISE NOTED | | | |
| ±.005 .000 | | | |
| ±.015 .00 | | | |
| FRACTIONAL | | | |
| ±1/64 | | | |
| ANGULAR ±1° | | | |

THESE DRAWINGS AND SPECIFICATIONS CONTAIN INFORMATION PROPRIETARY AND CONFIDENTIAL TO CONVEYER ACCESSORY CORPORATION. NO PORTION OF THIS DRAWING MAY BE REPRODUCED OR COPIED WITHOUT PRIOR WRITTEN PERMISSION OF CONVEYER ACCESSORY CORPORATION.

CAE CONVERTER ACCESSORY CORP. WIND GAP, PA

TITLE: MODEL #400G REGENERATIVE BLOWER

DRAWN BY: MJT SCALE: 1/8"=1"

DWG. NO.: 20222-52 DATE: 1-21-05

CUSTOMER: MEPROJ

CUSTOMER SQ#: DATE: