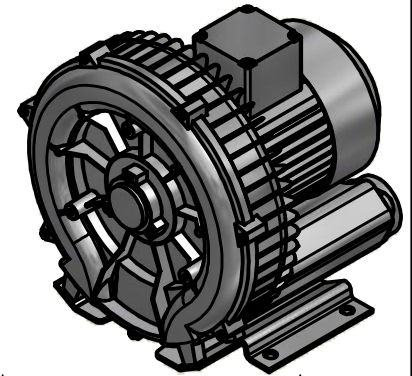
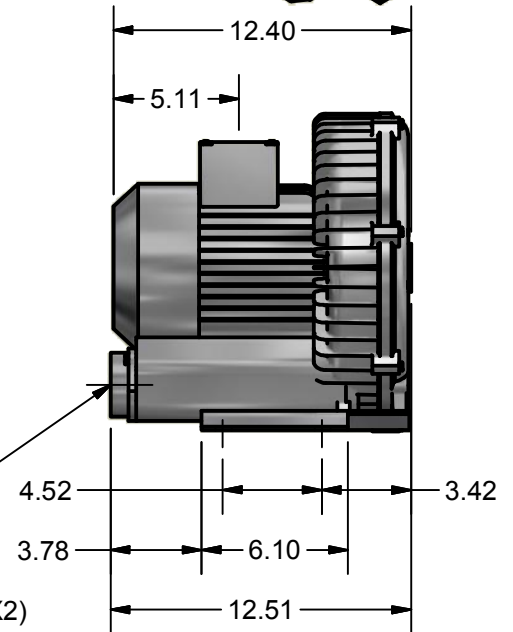
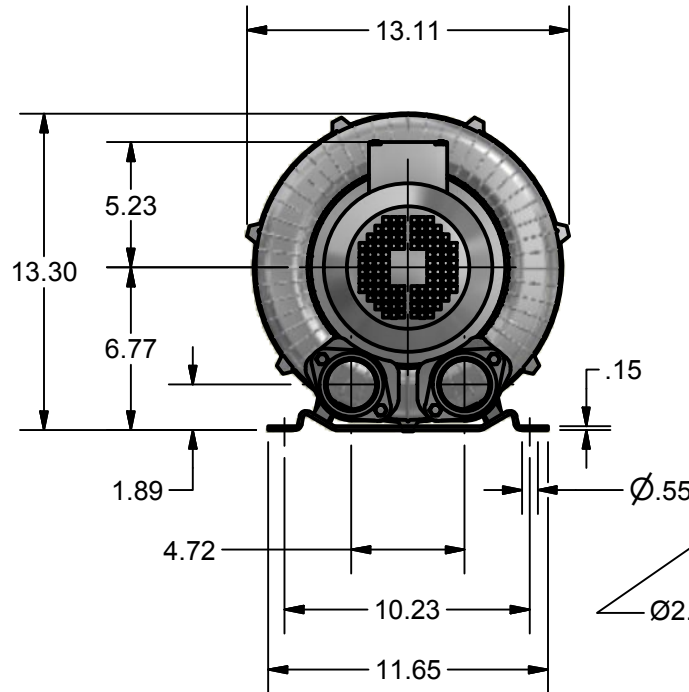
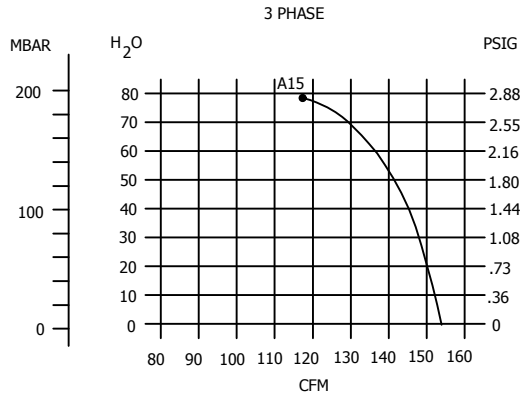


MODEL NO.	CURVE NO.	FLOW (CFM)	MAX. PRESSURE (INCH WATER)	MAX. VACUUM	SOUND LEVEL (db)	INLET / OUTLET NPT
501AB	A15	155	79	68	70	2.00"

PHASE	VOLTAGE	CURRENT	KW	HP	WEIGHT (LBS)
3	220-275/380-480	6.0Δ/3.5Y	1.5	2.00	49



PRESSURE PERFORMANCE CURVE



CUSTOMER: _____
 APPROVED BY: _____ DATE: _____

ACCESSORIES:	PART NO.
FILTER CANISTER:	20222-236
FILTER ELEMENT:	20222-237
SILENCER:	20222-229
ENCLOSED MOTOR STARTER (230V):	20222-256
ENCLOSED MOTOR STARTER (460V):	20222-257
VARIABLE FREQUENCY DRIVE (230V):	20222-258
VARIABLE FREQUENCY DRIVE (460V):	20222-259

NOTES: _____

SHOWN, PART#20222-223

THESE DRAWINGS AND SPECIFICATIONS CONTAIN INFORMATION WHICH CONVERTER ACCESSORY CORPORATION CONSIDERS PROPRIETARY AND CONFIDENTIAL. NO PORTION OF THIS DRAWING MAY BE REPRODUCED OR COPIED WITHOUT PRIOR WRITTEN PERMISSION OF CONVERTER ACCESSORY CORPORATION.

CAC CONVERTER ACCESSORY CORP.
 WIND GAP, PA 18091
 WWW.CONVERTERACCESSORY.COM

TITLE			
MODEL#501AB REGENERATIVE BLOWER			
SIZE	DWG NO	REV	
A	18503-279		
DATE	DRAWN	FILE	QUOTE NO.
		MEMAST	