

## Trim-AX™ Dual Blade Chopper OPERATING INSTRUCTIONS

### Important:

Read these instructions entirely before installing and operating the Trim-AX™ dual blade chopper.

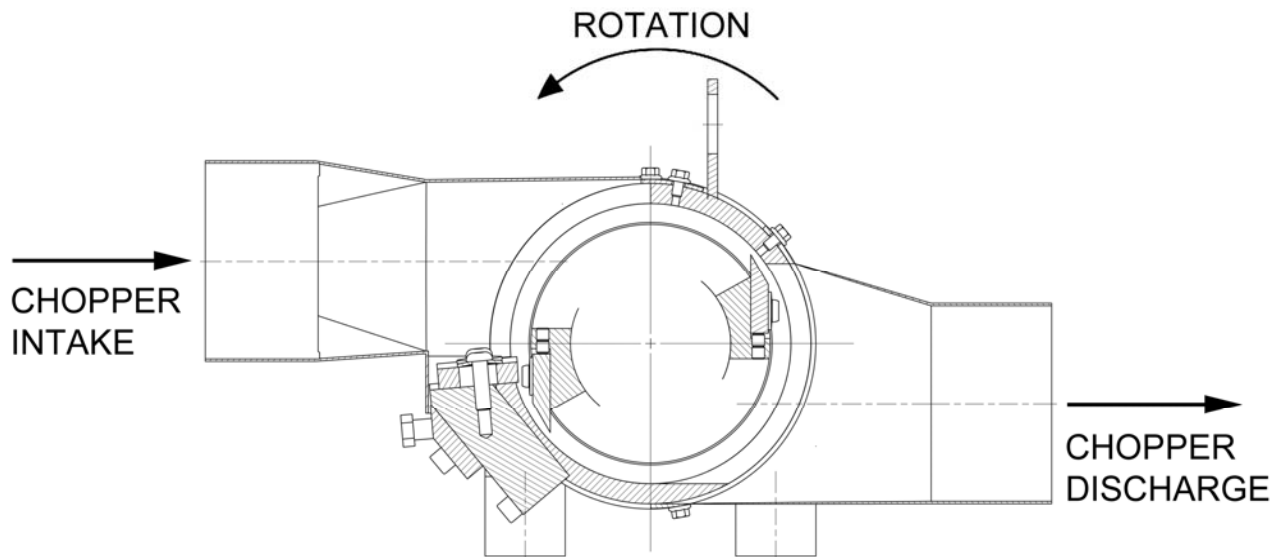
During installation be sure all lock-out / tag-out procedures are followed.

**NEVER** remove guards or transition pieces during installation and / or operation.

## Trim-AX™ Dual Blade Chopper OPERATING PRINCIPLE

The Trim-AX™ chopper incorporates rotating blades which interface with a stationary bed knife blade. Material is cut at the interface point of the rotating blades and stationary bed knife blade. Two cuts are performed per revolution of the motor and rotor mounted blades. Typically, these choppers are supplied with 1725 RPM AC motors. At maximum rotational speed, over 3,400 cuts per minute can be achieved.

Typical uses for this chopper are to chop continuous edge trim into pieces to allow very long pneumatic conveying distances and to ease containment of edge trim scrap. These choppers are designed to be teamed with pneumatic edge trim removal units, such as CAC's Fox TrimAway system.



## **FACTORY KNIFE BLADE SETTING**

Clearance between the rotating knife blades and the bed knife blade is critical. Each chopper's blade gap is factory preset for your application to provide for the best possible cut. This knife blade clearance must be less than the thickness of the material being chopped.

## **KNIFE BLADE REPLACEMENT AND SHARPENING**

**Power must be disconnected and all of your in-house lock-out / tag-out procedures must be followed prior to servicing the Trim-AX™ dual blade chopper.**

Worn or damaged knife blades must be replaced or sharpened to ensure the proper operation of the Trim-AX™ chopper. The Trim-AX™ chopper must be returned to the factory for knife blade replacement / sharpening. If service is required for your chopper, please contact us at:

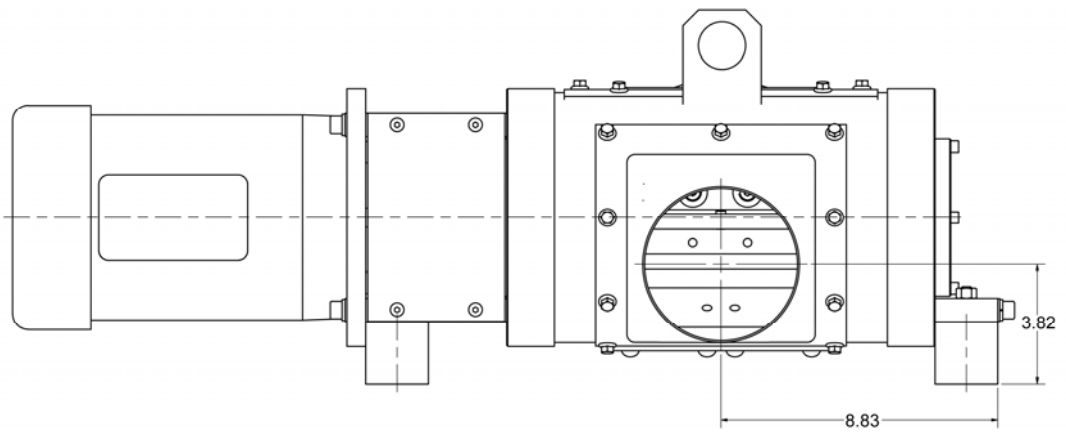
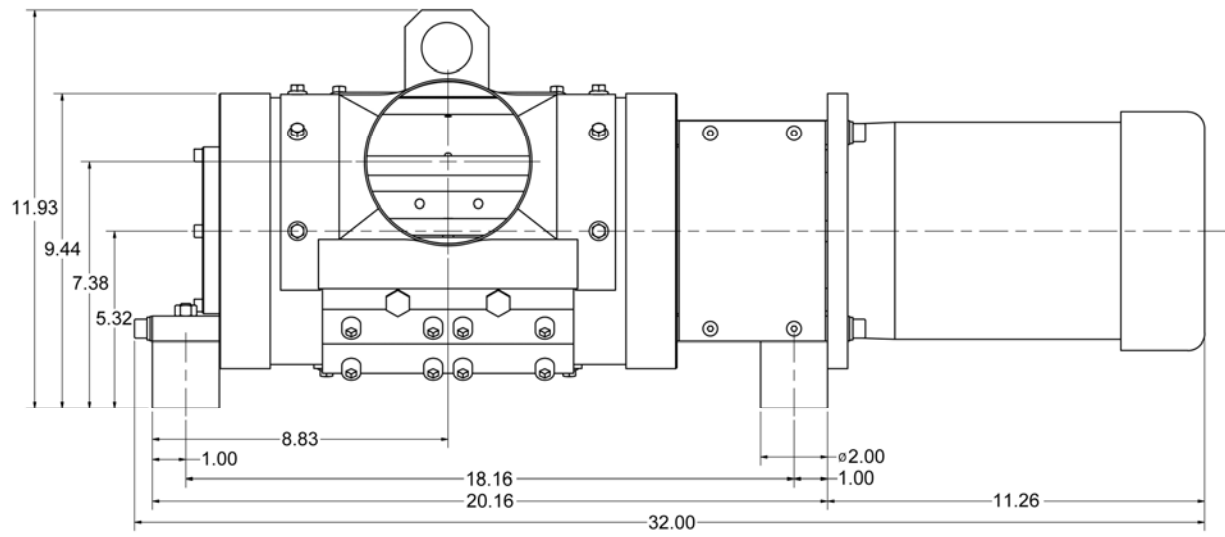
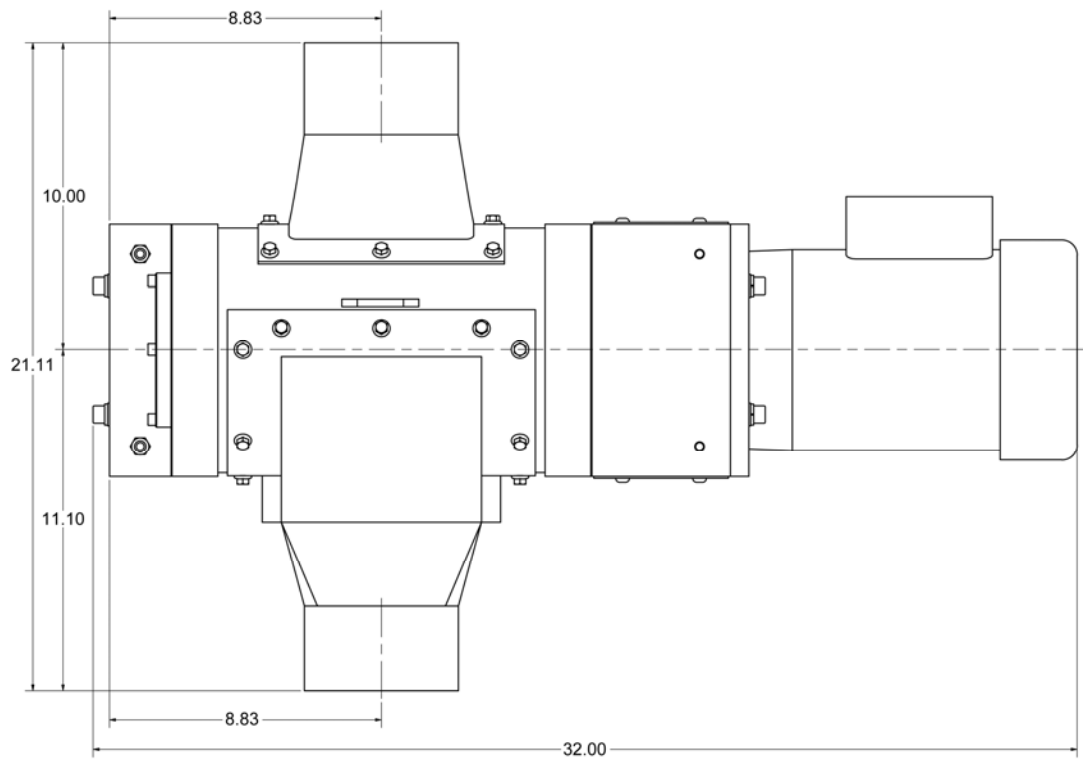
Converter Accessory Corporation  
201 Alpha Road  
PO Box 188  
Wind Gap, PA 18091  
800-433-2413 – Toll free phone, USA  
610-863-6008 – Phone  
800-709-1007 – Toll free fax, USA  
610-863-7818 – fax  
[sales@converteraccessory.com](mailto:sales@converteraccessory.com) – email  
[www.converteraccessory.com](http://www.converteraccessory.com) – web

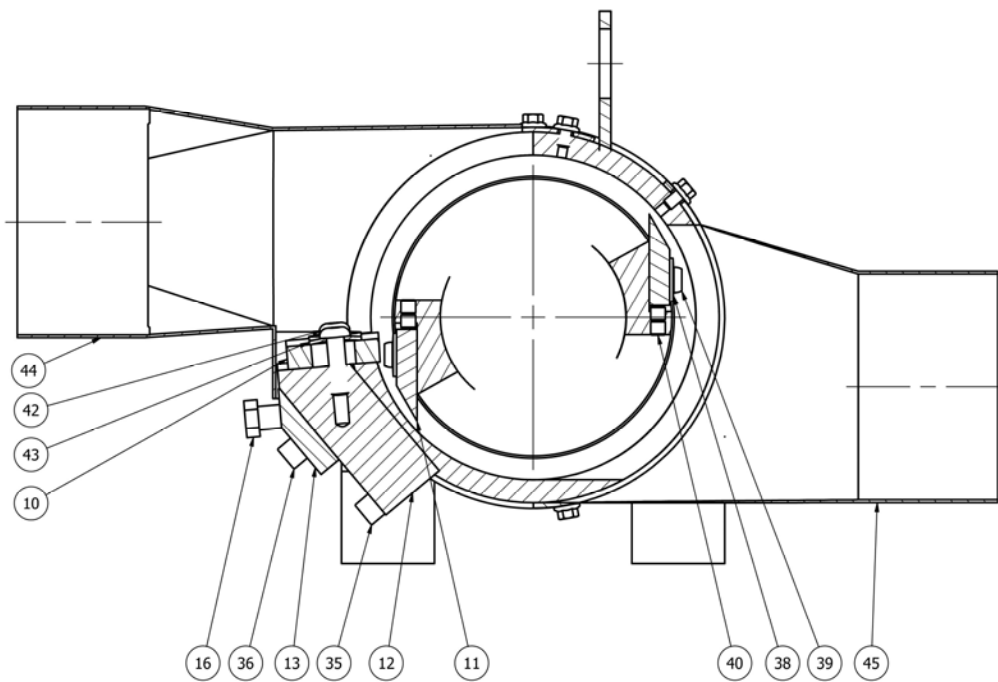
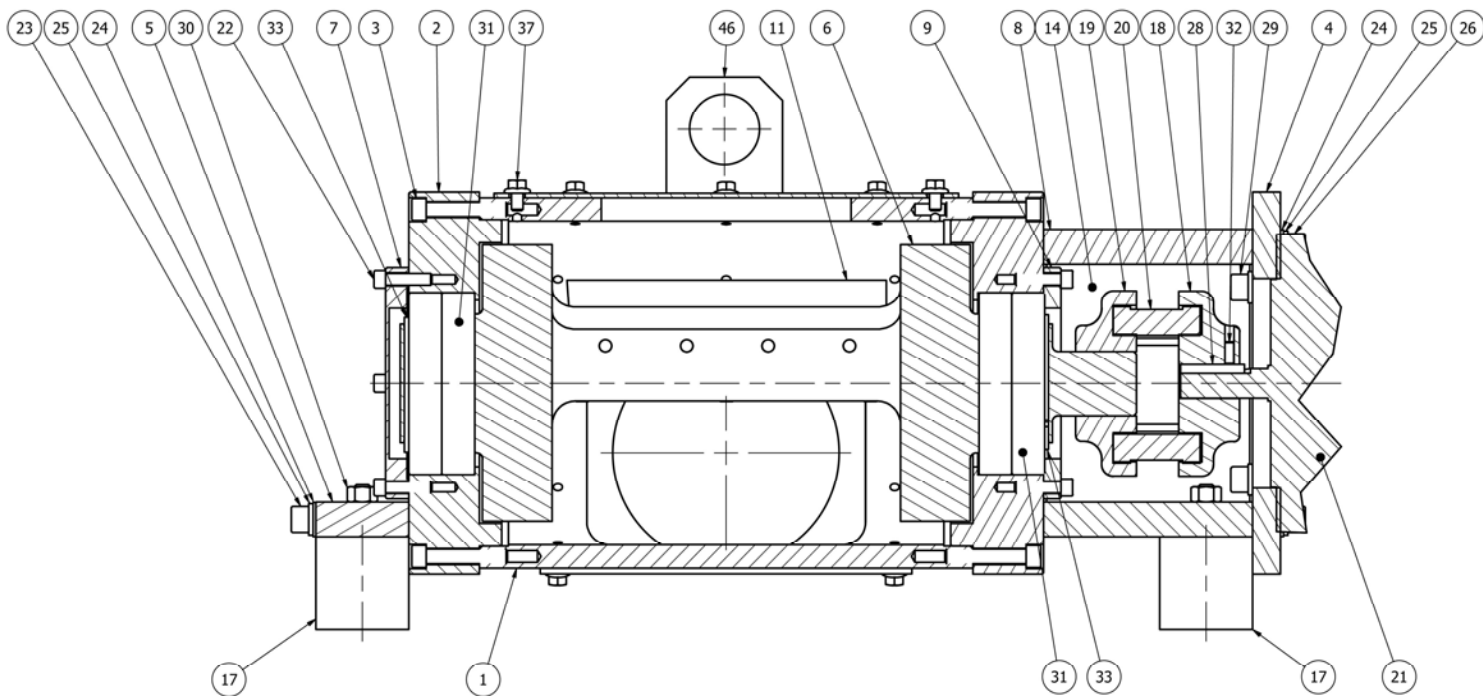
## INSTALLATION

- 1) **Power must be disconnected and all of your in-house lock-out / tag-out procedures must be followed prior to installing the Trim-AX™ dual blade chopper.**
- 2) We recommend the trim chopper be wired by a licensed electrician.
- 3) Mount the chopper to a foundation. Bolt the chopper in place using the 4 foot mounts.
- 4) Connect duct work to the chopper intake and discharge.
- 5) After completing the wiring for the chopper, check the rotation of the motor. Refer to the label located on the chopper motor, indicating the proper rotation of the chopper. If the label is missing or you are unclear as to the proper rotational direction of the chopper please contact us. **Use of the chopper with rotation in the wrong direction will cause catastrophic failure of the chopper. Make sure the chopper is rotating in the proper direction prior to operating the chopper.**

## OPERATION

- 1) Prior to operation, follow the installation instructions, above.
- 2) Be sure all guards, transition pieces and intake and discharge ducts are securely fastened in place
- 3) Start the chopper prior to feeding material into the chopper. If you are using a pneumatic waste conveying system, like CAC's Fox TrimAway system, **ALWAYS START THE CHOPPER PRIOR TO STARTING THE PNEUMATIC WASTE CONVEYING SYSTEM.** If material is fed into the chopper without the blades rotating, catastrophic failure of the chopper could result when the chopper is started, with material binding the rotation of the knife blades.
- 4) Feed material into the chopper. Check to be sure the pieces are discharged from the discharge side of the chopper.





ITEM	PART NUMBER	DESCRIPTION	QTY
1	40511-98	CHOPPER BODY	1
2	40511-11A	CHOPPER HOUSING CAP	2
3	-H-	5/16-18 X 1-3/4"LG. S.H.C.S.	12
4	40511-16A	MOTOR MOUNTING PLATE	1
5	40511-20	FOOT PLATE	1
6	40511-09D	2-BLADE ROTOR WELDED ASSEMBLY	1
7	40511-19B	BEARING CAP	1
8	40511-17	MOTOR MOUNTING PLATE STAND-OFF	2
9	40511-18	BEARING CAP COUPLING SIDE	1
10	40511-12A	CARBIDE BEDKNIFE	1
11	40511-13C	ROTOR KNIFE	2
12	40511-14C	BEDKNIFE MOUNTING BLOCK	1
13	40511-15D	BEDKNIFE BACK PLATE	1
14	40511-21A	COUPLING GUARD	2
15	40511-27B	BED KNIFE ADJUST CYLINDER	2
16	40511-28B	BED KNIFE ADJUSTMENT BOLT	2
17	40511-30	FOOT MOUNT	4
18	40511-31	FLEX FLANGE WITH 5/8 DIA. THRU BORE	1
19	40511-32	FLEX FLANGE WITH 1-3/8 DIA. THRU BORE	1
20	40511-33	COUPLING SLEEVE INSERT	1
21	40511-35	MOTOR 2HP	1
22	-H-	1/4-20 X 1.00"LG. S.H.C.S.	8
23	-H-	3/8-16 X 2-1/2"LG. S.H.C.S.	2
24	-H-	3/8" PLAIN WASHER	6
25	-H-	3/8"LOCK WASHER	10
26	-H-	3/8-16 X 6.00"LG. S.H.C.S.	4
27	-H-	5/16 X 5/16 X 1.50"LG. SQ. KEY (ROTOR SHAFT)	1
28	-H-	3/16 X 3/16 X 1.37"LG. SQ. KEY (MOTOR SHAFT)	1
29	-H-	3/8-16 X 1.00"LG. S.H.C.S.	4
30	-H-	3/8-16 HEX NUT	4
31	40511-40	BALL BEARING	4
32	-H-	10-32 X.50"LG. S.S.S. FLAT POINT	4
33	-H-	65MM EXTERNAL RETAINING RING	2
34	-H-	1/4-20 X 3/8"LG. B.H.C.S.	8
35	-H-	3/8-24 X 1.75" LG. S.H.C.S.	4
36	-H-	3/8-24 X 2-1/4"LG. S.H.C.S.	4
37	-H-	1/4-20 X 3/8" LG. HEX FLANGE HEAD CAP SCREW	18
38	40511-45A	ROTOR KNIFE DISC SPRING	8
39	-H-	5/16 X 1.00"LG.TORX BUTTON HEAD CAP SCREW	8
40	-H-	5/16-24 X.31"LG. S.S.S. FLAT POINT	12
41	-H-	3/8-24 X 1.25"LG. F.H.C.S.	2
42	-H-	3/8-24 X 1-1/4"LG. B.H.C.S.	3
43	40511-44	BED KNIFE DISC SPRING	3
44	40511-101	5" FLANGED INTAKE TRANSITION	1
45	40511-102	5" DISCHARGE FLANGED TRANSITION	1
46	40511-78A	LIFTING TAB	1
47	-H-	1/4-20 X 3/8"LG. S.S.S. FLAT POINT (ROTOR COUPLING)	2