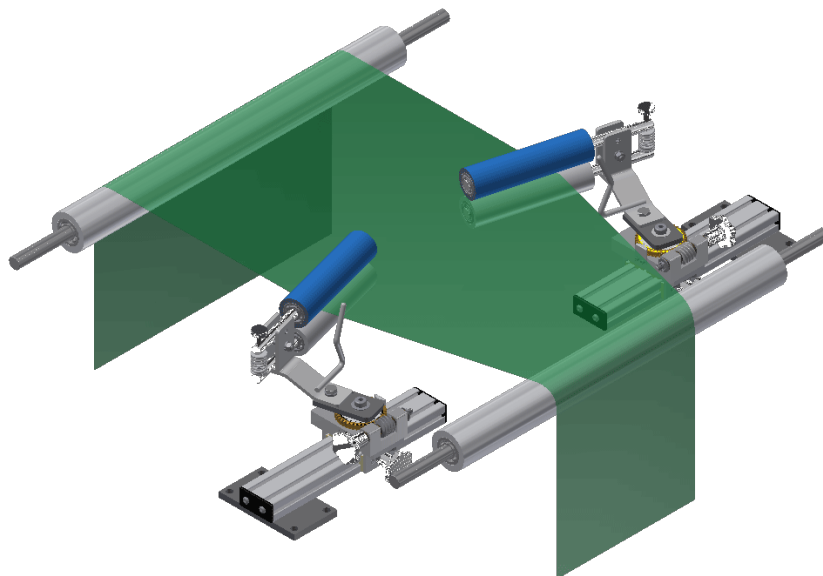




# Wrinkle Removal Systems

- WrinkleSTOP<sup>®</sup>
- Scroll Roll
- Adjusta-Pull<sup>®</sup>



# WrinkleSTOP® No-Bow anti-wrinkle roll



“Only a few degrees short of perfection, expanding surface spreader rolls shine with thin gauge webs.” Of all the wrinkle removal devices presented during a CEMA annual meeting in St. Paul Minnesota (presentation by a major corporation as part of an independent study), only **expanding surface** type rolls removed **all of the wrinkles, all of the time**. The presentation included curved axis rolls, metal grooved rolls, rubber grooved rolls, masking taped rolls, Teflon® taped rolls and tapered rolls.

Converter Accessory Corporation’s patented WrinkleSTOP® are the only smooth surface, linear, adjustable, expanding surface rolls on the market.

## Expanding Surface Rolls:

The only wrinkle removal system in a recent major independent presentation to remove all the wrinkles, all of the time!

## Special Features and Benefits:

- Field serviceable design—reduces downtime
- The first and only spreader roll that features **optimum spread adjust**—you can adjust the spreading action for practically any converting application
- New rubber sleeve compound and manufacturing process—provides longer sleeve life
- New clamping mechanism—provides greater reliability
- Plus all of the features and benefits of the traditional WrinkleSTOP

WrinkleSTOP® work well on all types of materials:

**Cloth • Paper • Foil • Film  
Plastics • Nonwovens**

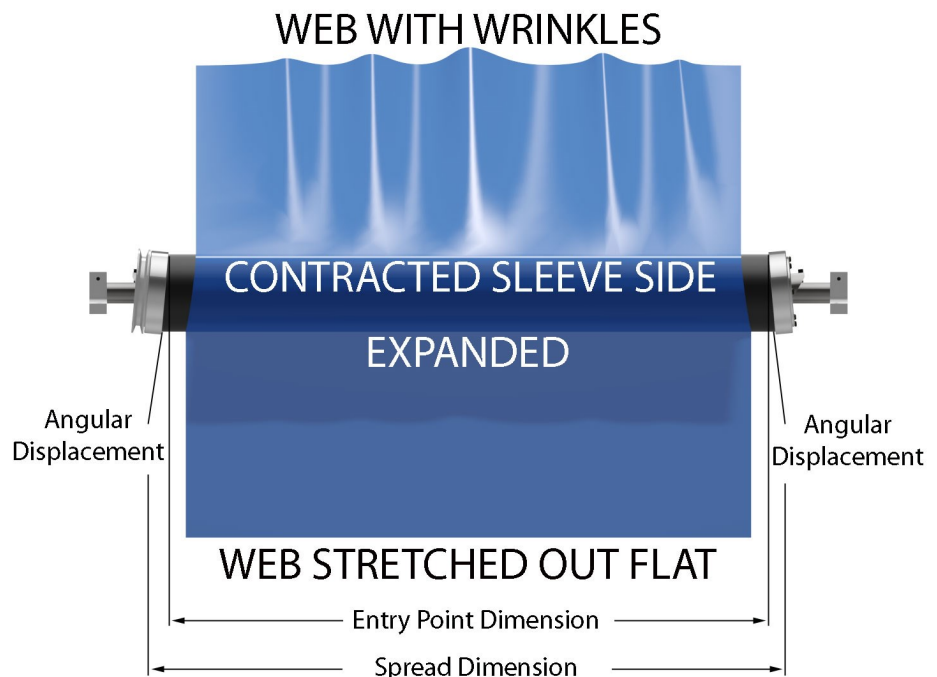
## How the WrinkleSTOP® works:

The WrinkleSTOP® anti-wrinkle roll surface is a stretchable rubber sleeve, supported by a series of rubber support disks. As the roll rotates, the sleeve expands for 180° and contracts 180°. The material enters the roll at the point where sleeve expansion begins and exits at a point prior to sleeve contraction. The result—the desired spreading action is achieved without distortion of the web.

### The amount of spreading is controlled by two factors:

1. Wrap angle of material (180° maximum)
2. The angular displacement of the end caps

*End caps may be independently adjusted while machine is in motion, providing total control of spreading action to match your requirements.*



# WrinkleSTOP® NO-BOW anti-wrinkle roll

## Featuring Zero-Web Distortion

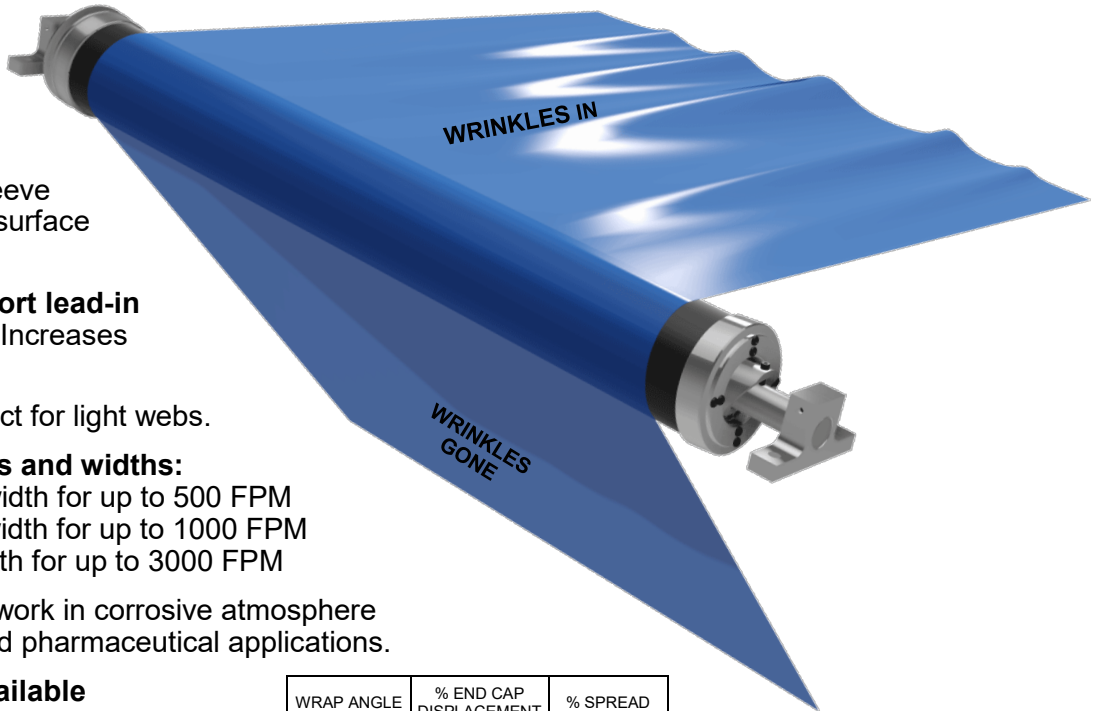
“Finally, a spreader roll that doesn’t tear or distort the web’s center!”



WrinkleSTOP® work well on all types of materials:  
Cloth • Paper • Foil • Film • Plastics • Nonwovens

### Features and Benefits:

- **Bowless, smooth roll provides zero-web distortion:** Won't mark, stretch, introduce wrinkles into the web, or send non-level web into other level sensitive devices such as moisture or weight meters. Prevents stressed or torn web center areas and altered centerline travel.
- **Independent edge-to-edge adjustability while the web is in motion:** Degree of expansion can be quickly altered at each end cap, allowing correction of distortion produced at earlier points in the line. This provides total control of spreading action to match your requirements.
- **No special tools needed to adjust degree of spreading action:** Provides productive, cost-effective performance.
- **Works well in vacuum chambers and can be used to run in high-heat applications:** Provides highly reliable, productive performance.
- **Easy installation:** Directly replaces existing anti-wrinkle rolls or idlers.
- **Accepts and delivers web at any angle:** Saves space in your plant line, improves web runs, and allows replacement of existing limited-angle roll arrangements with fewer rolls.
- **Surface designed for high traction:** Stretchable rubber sleeve maintains high traction without surface glazing.
- **Works well with extremely short lead-in and lead-out web distances:** Increases productivity while saving space.
- **Drive sheave available:** Perfect for light webs.
- **Available in various diameters and widths:**
  - 3.25" Diameter up to 20" face width for up to 500 FPM
  - 5.5" Diameter up to 100" face width for up to 1000 FPM
  - 8" Diameter up to 200" face width for up to 3000 FPM
- **Versatile:** Can be designed to work in corrosive atmosphere applications, as well as food and pharmaceutical applications.
- **Static conductive roll face available**

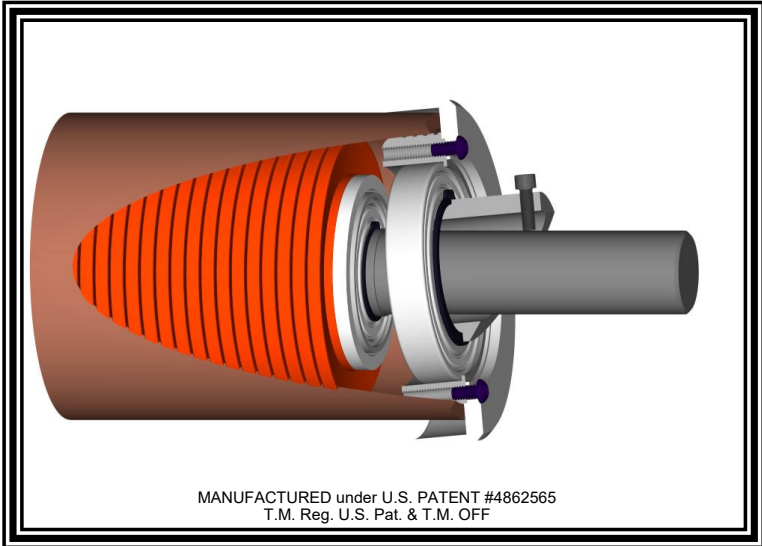


WRAP ANGLE	% END CAP DISPLACEMENT	% SPREAD
90°	0	0
	50	25
	100	50
120° - 180°	0	0
	50	50
	100	100

Visit [www.converteraccessory.com](http://www.converteraccessory.com) to view and download specification sheets

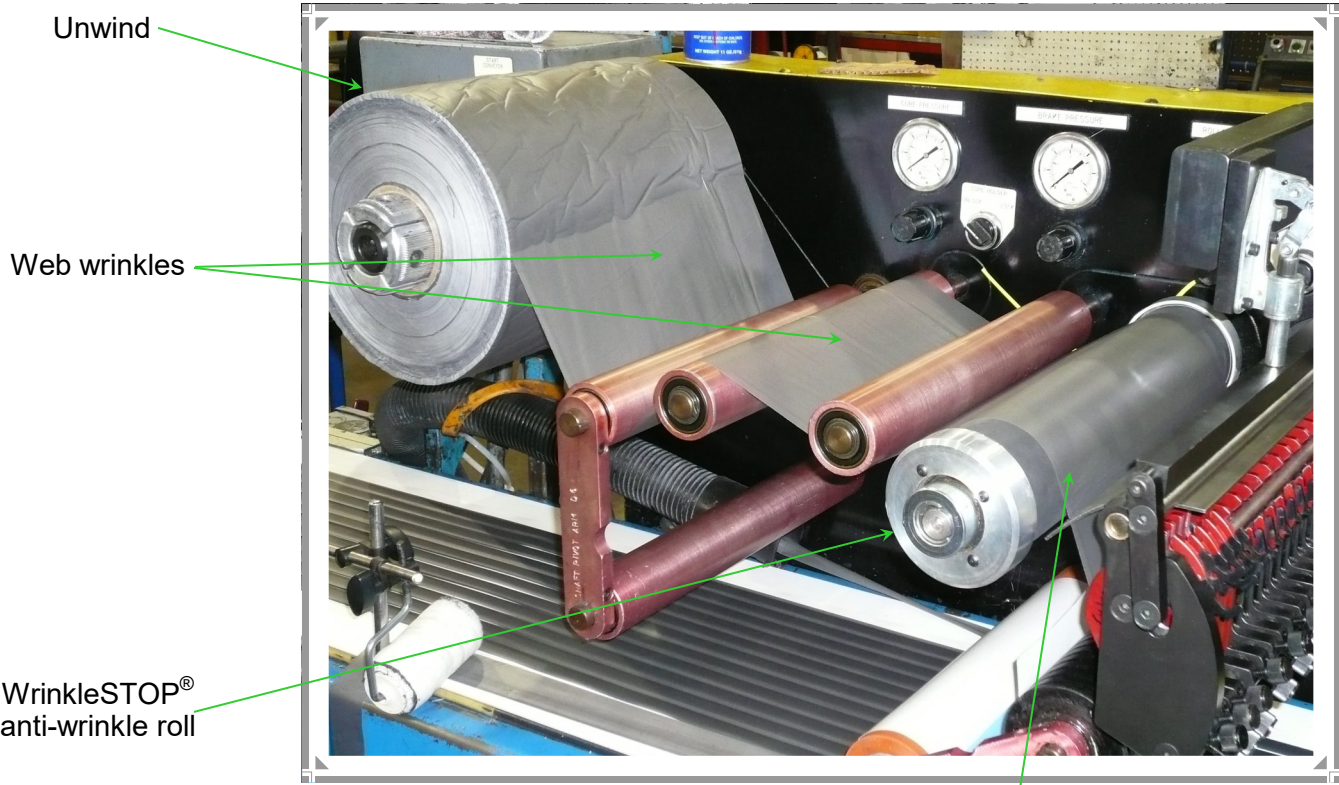
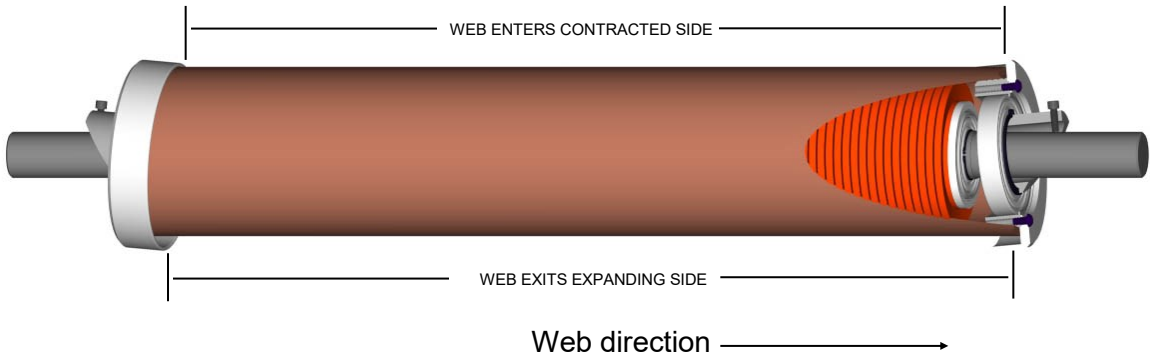
# Inside the WrinkleSTOP®

Surface remains smooth and linear (no-bow)



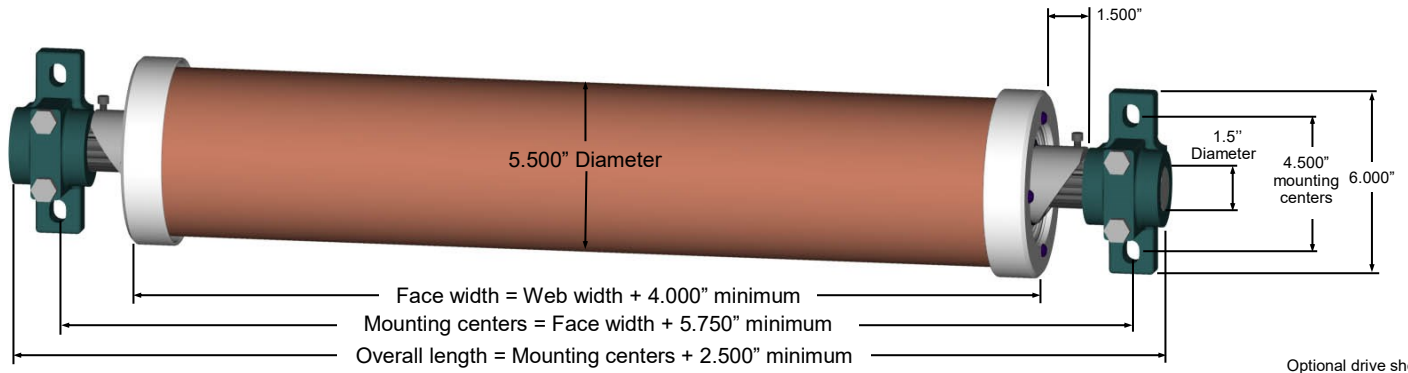
### Adjustments:

- Are made from each end independently
- Can be made while web is in motion
- Are made with standard tools
- Are set from 0-100% spreading





# 5.5" Diameter WrinkleSTOP®



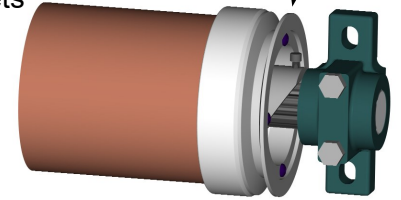
## Design Parameters:

- Maximum roll face: 100" (96" web width)
- Maximum web speed: 1000 feet per minute
- Maximum web tension: 12 pounds per linear inch
- Minimum turning force: .25 pounds per linear inch
- Approximate roller weight: 13 pounds + 1.7 pounds per inch of face
- Dead shaft construction
- 50 Durometer neoprene sleeve

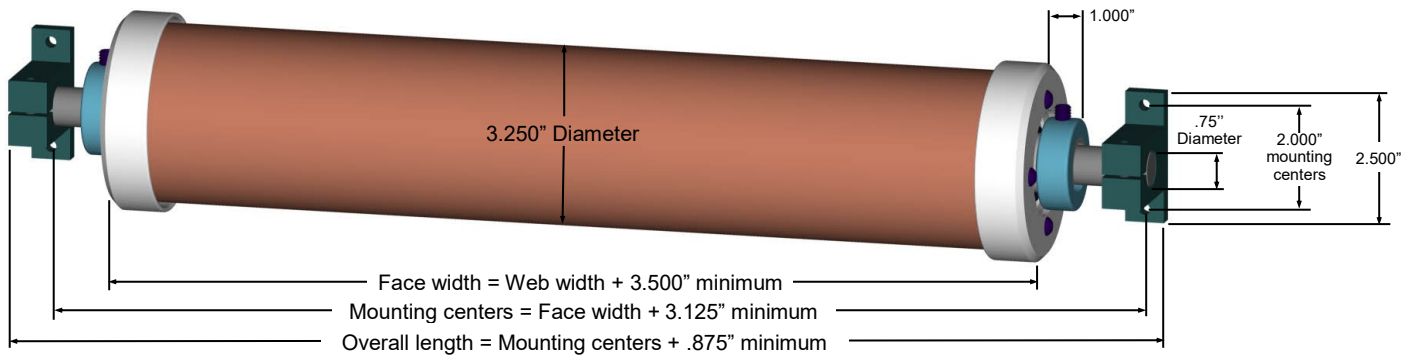
## Options:

- Flange type mounting brackets
- Drilled and tapped ends
- Drive sheave
- Various sleeve materials

Optional drive sheave  
6.000" Outside diameter  
5.600" Pitch diameter—B Belt  
5.200" Pitch diameter—A Belt



# 3.25" Diameter WrinkleSTOP®



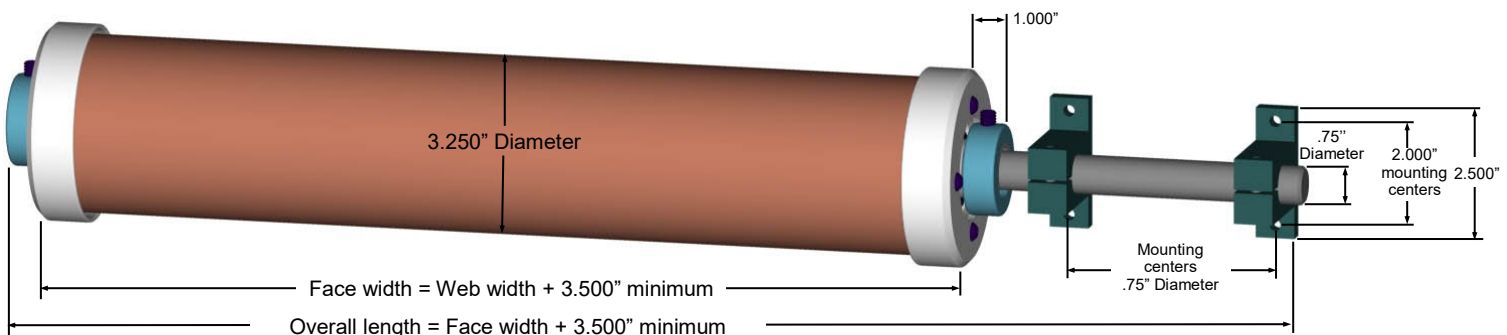
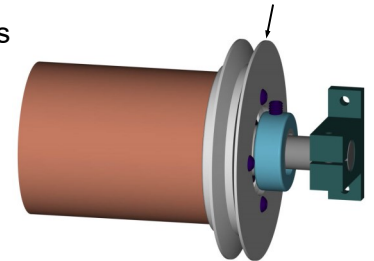
## Design Parameters:

- Maximum roll face: 20" (16.5" web width)
- Maximum web speed: 500 feet per minute
- Maximum web tension: 4 pounds per linear inch
- Minimum turning force: .17 pounds per linear inch
- Approximate roller weight: 7 pounds + .75 pounds per inch of face
- Dead shaft construction
- 50 Durometer neoprene sleeve

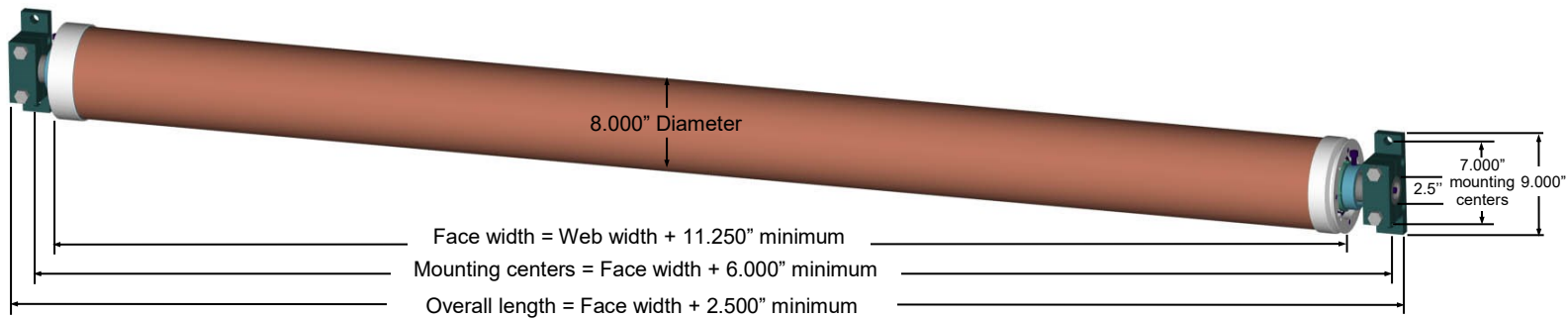
## Options:

- Flange type mounting brackets
- Drilled and tapped ends
- Drive sheave
- Various sleeve materials

Optional drive sheave  
4.875" Outside diameter  
4.575" Pitch diameter—B Belt  
4.275" Pitch diameter—A Belt



# 8" Diameter WrinkleSTOP®



## Design Parameters:

- Maximum roll face: 200" (188" web width)
- Maximum web speed: 3000 feet per minute
- Maximum web tension: 12 pounds per per inch of face
- Minimum turning force: .25 pounds per linear inch

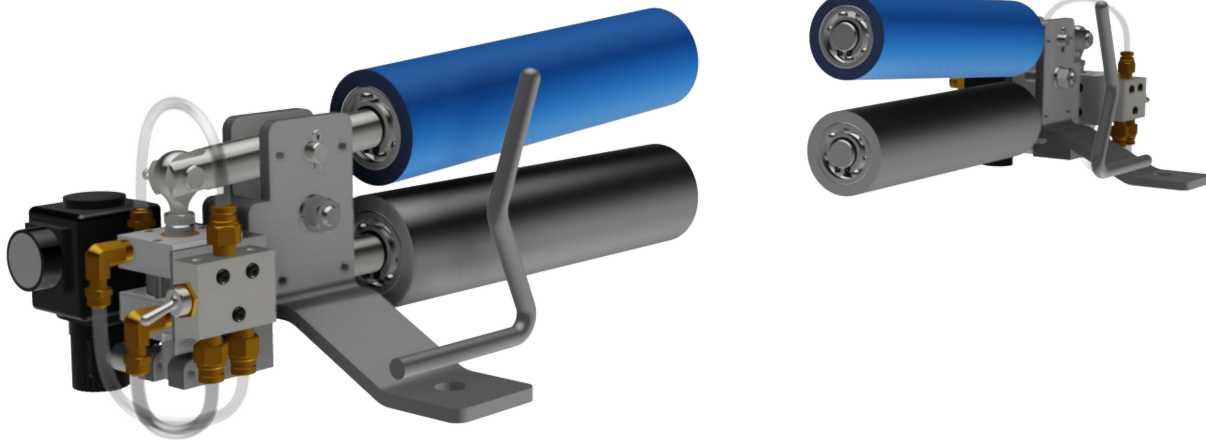
- Dead shaft construction
- 50 Durometer neoprene sleeve
- Approximate roller weight: 75 pounds + 3.8 pounds per linear inch

## Options:

- Flange type mounting brackets
- Various sleeve materials

U.S. Patent # 5,476, 437 5,461,760 & 4,862,565 T.M. Reg U.S. Pat & T.M. OFF

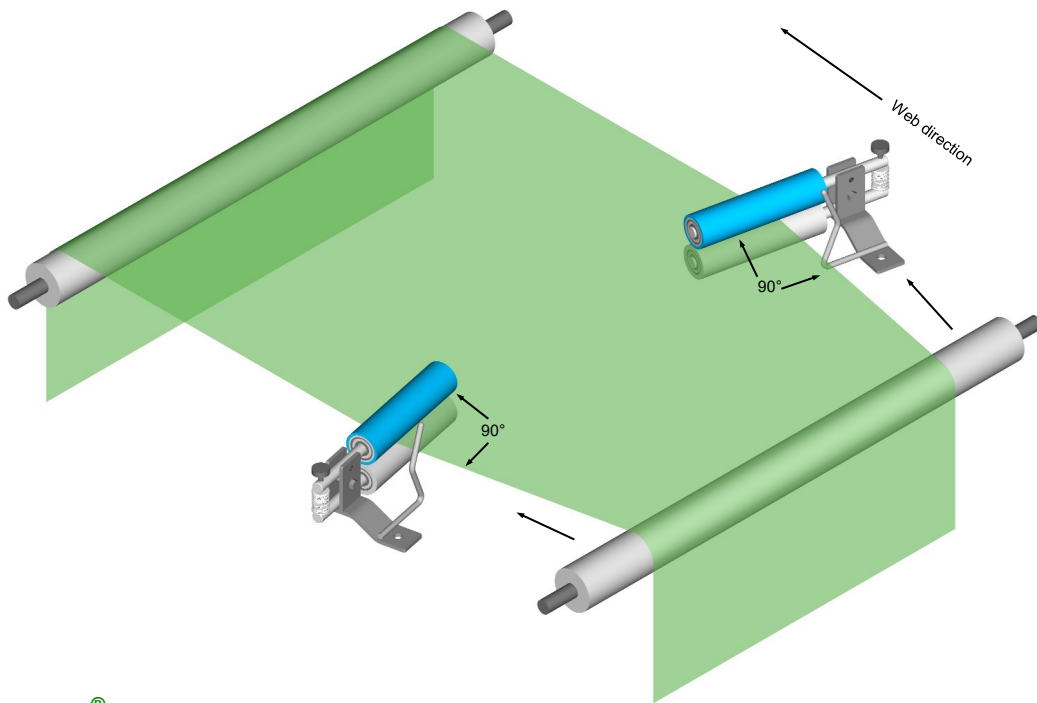
# Air Loaded Adjusta-Pull® Nip Type Spreaders



The Air loaded Adjusta-Pull assemblies are easy to open and close which allows fast and easy web threading and include a pressure regulator to accurately adjust the air pressure to accommodate all types of material including delicate webs. They can be designed to allow remote open and close functionality.

- Air loaded for very fine pressure adjustment—perfect for very delicate to the toughest web
- Air loaded for fast and easy web threading
- Remote open / close possible
- Rollers with ball bearings, designed for long trouble free life
- Easy installation
- Quick delivery
- *NEW!* Mounting bracket with angular adjustment available

# Adjusta-Pull® Nip Type Spreaders



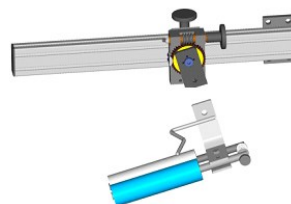
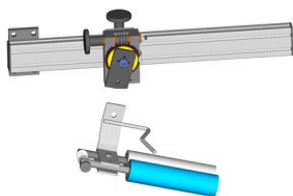
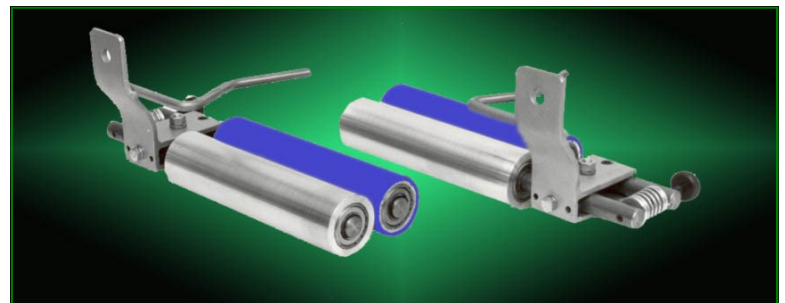
## The Adjusta-Pull® Concept

The Adjusta-Pull® web spreading system is a remarkably efficient and cost effective method for wrinkle removal and web spreading. This system works based on the web handling principal—a **web will seek to be perpendicular to a roll in its entry span to that roll.**

Adjusta-Pull® assemblies include two nip roll assemblies. Each nip assembly consists of two 9" face (6" face is also available), 2.25" diameter rolls. The standard design includes one roll in each nip assembly to be rubber covered (assemblies are available with both rolls rubber covered). Each of the nip assemblies are mounted on each edge of the web and each nip assembly keeps each of the webs edges in traction with each nip assembly.

When the nip assemblies are angled away from each other, each of the webs edges will try to maintain a 90 degree angle to each nip assembly. So this spreading device effectively and aggressively pulls on each edge of your web to remove wrinkles. Increasing the angular displacement of each nip assembly increases the web spreading action. The greater the angular displacement of each nip assembly the greater the spreading.

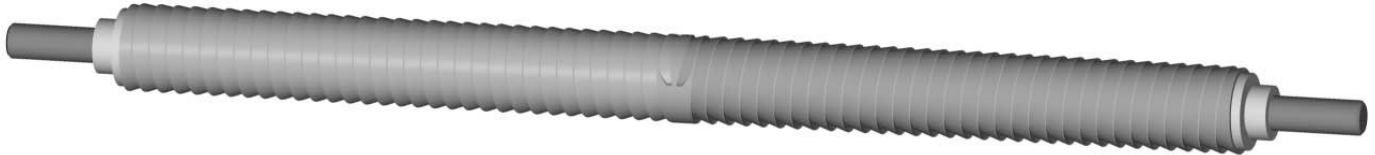
- Effectively and aggressively remove wrinkles from any web
- Amount of spreading is easily adjustable
- Nip pressure adjustment
- Simple, rugged steel design
- Rolls use two ball bearing system
- Quick delivery
- Installation in under 15 minutes
- **NEW!** Mounting bracket with angular adjustment available



Visit [www.converteraccessory.com](http://www.converteraccessory.com) to view and download specification sheets



## Scroll Roll

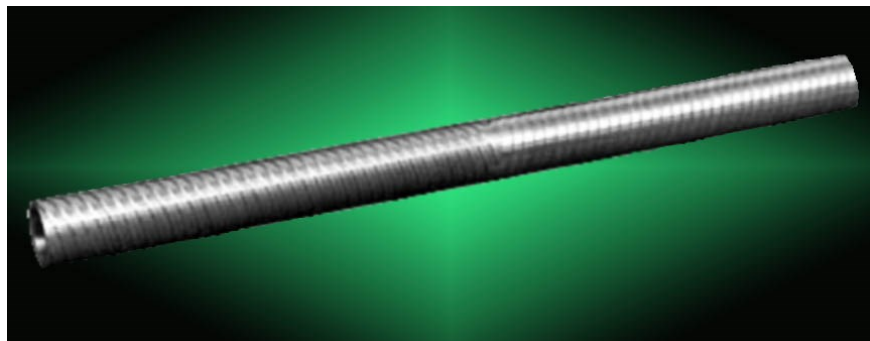


### Multi-Lead Scroll Roll

CAC's Scroll Roll utilizes long lead threads, leading from the center out toward each edge of the roll face. There are four standard thread forms available: 1 start / .375" lead, 2 starts / .750" lead, 4 starts / 1.500" lead and 8 starts / 3.00" lead. The number of leads dictates the aggressiveness of the roll, more leads means more aggressiveness. However, 4 starts / 1.500" lead is our most popular model.

Scroll rolls are used with all types of materials. They are extremely useful when used as an idler roll in high speed applications where air entrainment between web to roller face is a problem. Scroll rolls can be used as dead bars or non synchronous driven rolls for extremely aggressive anti-wrinkle performance.

Scroll rolls are available in aluminum (standard), steel and stainless steel. Available coating / plating includes chrome, anodize, nickel and plasma.



Visit [www.converteraccessory.com](http://www.converteraccessory.com) to view and download specification sheets

### CONVERTER ACCESSORY CORPORATION

201 Alpha Road PO Box 188, Wind Gap, PA 18091-0188

•800-433-2413 •610-863-6008 Fax: •800-709-1007 •610-863-7818

[www.converteraccessory.com](http://www.converteraccessory.com) Email: [sales@converteraccessory.com](mailto:sales@converteraccessory.com)

Web Handling Technology . . . CAC Engineered and Manufactured





Converter Accessory Corporation  
www.converteraccessory.com

# NEW Air Loaded Adjusta-Pull® Nip Type Anti-Wrinkle System

## Adjusta-Pull®

Nip Type Anti-Wrinkle System



For more information, visit:

[www.converteraccessory.com/ap](http://www.converteraccessory.com/ap)

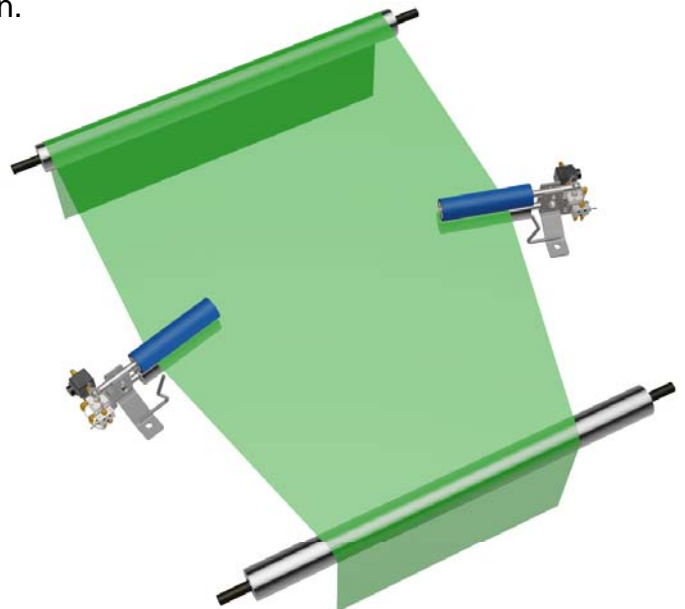
### Unique Adjusta-Pull® Concept

CAC's NEW air loaded anti-wrinkle system is a remarkably efficient and cost effective method for wrinkle removal and web spreading. This system works using the web handling principal that a web will seek to be perpendicular to a roll in its entry span to that roll.

Air loaded Adjusta-Pull® assemblies include two nip assemblies. Each nip assembly consists of two 9" or 6" face x 2.5" diameter rollers. Standard air loaded Adjusta-Pull® assemblies each have one rubber covered roller and one metal roller. The nip assemblies are mounted on each edge of your web and are in traction (because of the nipping action) with each edge of your web.

When the nip assemblies are angled away from each other, each of the webs edges will try to maintain a 90 degree angle to each nip assembly. So, this anti-wrinkle device effectively and aggressively pulls on each edge of your web to remove wrinkles. Increasing the angular displacement of each nip assembly increase anti-wrinkle aggression. The greater the angular displacement of each nip assembly the greater the anti-wrinkle aggression.

- Effectively and aggressively **removes wrinkles**
- **Air loaded** for very fine pressure adjustment - perfect for very delicate to the toughest web
- Air loaded for fast and easy web threading
- Remote open / close possible
- Rollers with ball bearings, designed for **long trouble free life**
- Typically in stock for fast delivery
- **Easy installation**
- NEW mounting bracket system is available
- **Made in the USA**

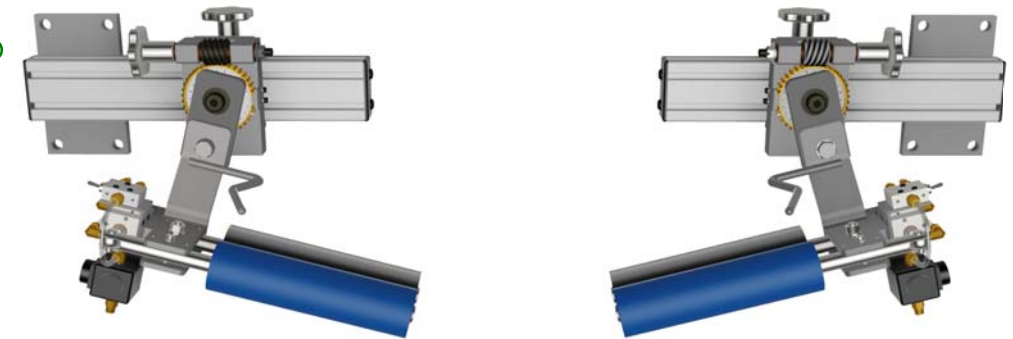




Converter Accessory Corporation  
www.converteraccessory.com

## Adjusta-Pull®

Nip Type Anti-Wrinkle System



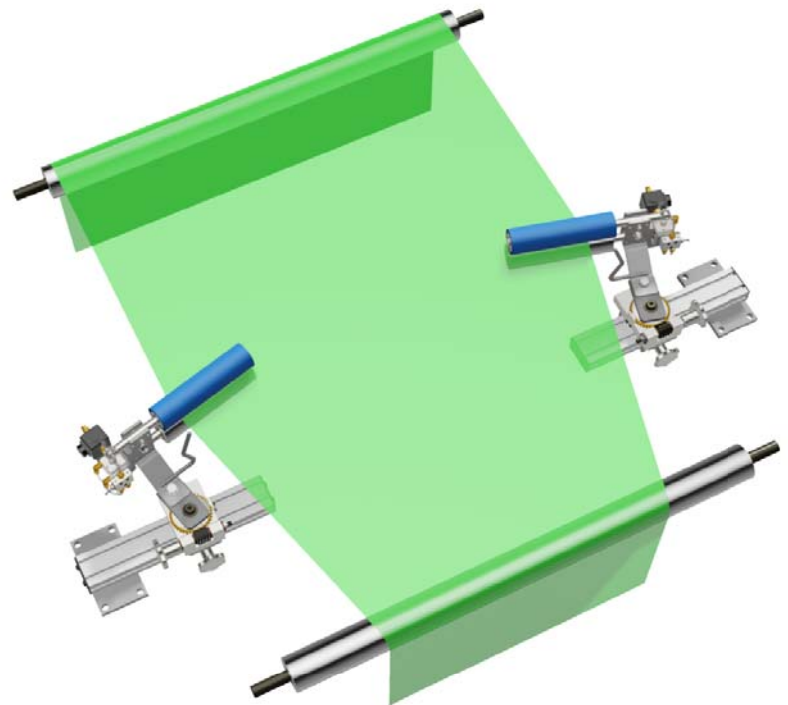
For more information, visit:

[www.converteraccessory.com/ap](http://www.converteraccessory.com/ap)

### Mounting Bracket with Angular Adjustment for Adjusta-Pull® Nip Type Anti-Wrinkle System

CAC's NEW mounting bracket is the perfect addition to your investment in Adjusta-Pull® nip type anti-wrinkle system. This mounting bracket is specially designed so the Adjusta-Pull® nip assemblies are easily mounted. Each bracket includes a slide assembly to easily reposition each Adjusta-Pull® nip assembly when web width changes are necessary. The brackets also include an angular displacement adjustment with dial indicator. This allows for easy, repeatable anti-wrinkle aggression adjustment while the web is in motion. Each bracket comes with a four bolt mounting plate for hassle-free cantilevered mounting.

- **Cantilevered** mount extruded aluminum slide rail
- Slide assembly for easy web width adjustment
- Built-in **angular adjustment** with dial indicator
- Purchase with your Adjusta-Pull® nip type anti-wrinkle system for a complete value added solution
- Perfect upgrade to add to an existing Adjusta-Pull® anti-wrinkle system
- **Hassle-free** installation
- Heavy duty
- **Made in the USA**



### Converter Accessory Corporation

201 Alpha Road, PO Box 188, Wind Gap, PA 18091-0188

www.converteraccessory.com  
sales@converteraccessory.com

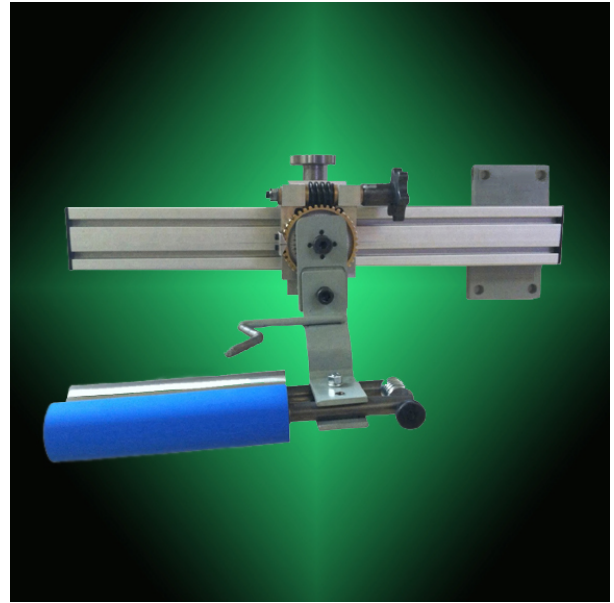
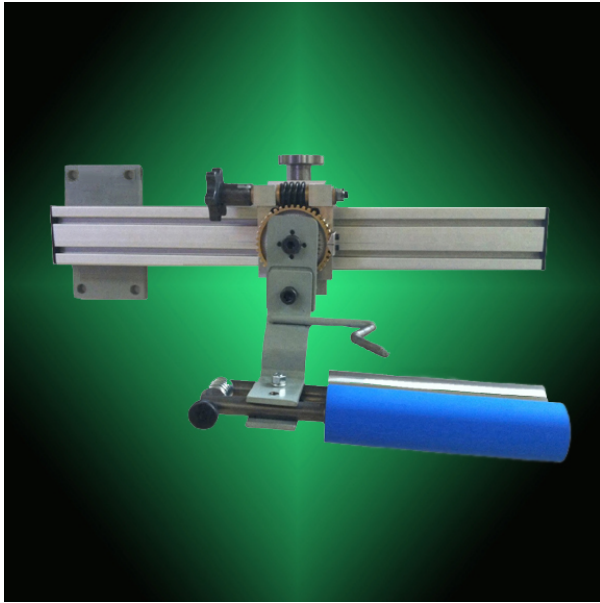
Phone: 800-433-2413  
610-863-6008

Fax: 800-709-1007  
610-863-7818



# Mounting Bracket with Angular Adjustment for Adjusta-Pull® Nip Type Anti-Wrinkle System

Converter Accessory Corporation  
www.converteraccessory.com

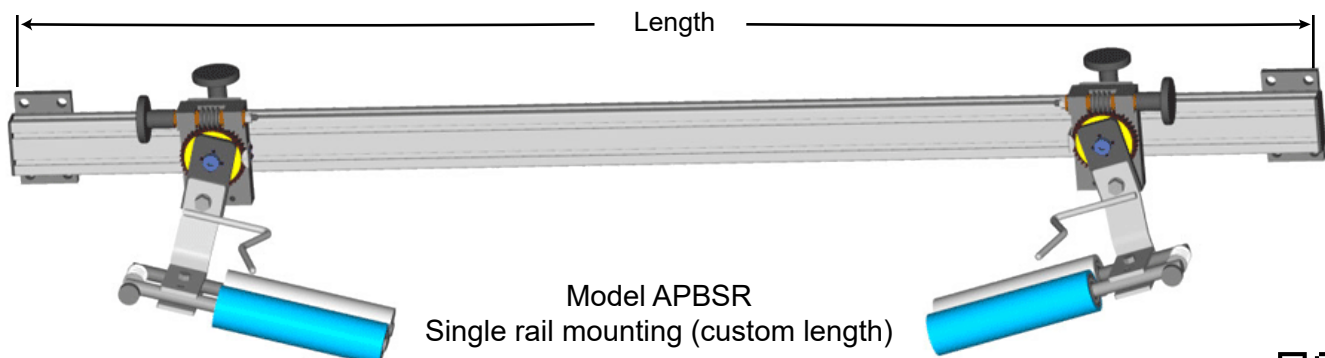


For more information, visit:

[www.converteraccessory.com/products/wrinkle/apbracket.php](http://www.converteraccessory.com/products/wrinkle/apbracket.php)

CAC's Adjusta-Pull mounting bracket, left and right side, each includes:

- Cantilevered mount, extruded aluminum slide rail
- Slide mount for easy web width adjustment
- Manual angular adjustment with angle indicator
- Purchase with your next order for Adjusta-Pull nip type anti wrinkle device or purchase just the mounting brackets and conveniently add your existing Adjusta-Pull assemblies
- Easy to mount / re-position
- Heavy duty construction



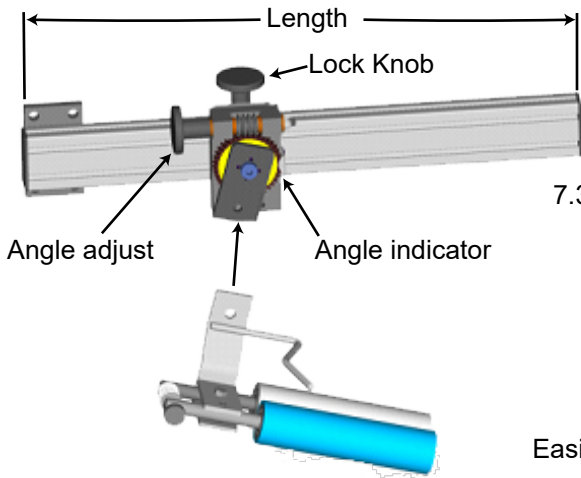
Brackets shown with Adjusta-Pull anti-wrinkle system mounted. Adjusta-Pull anti-wrinkle system sold separately.



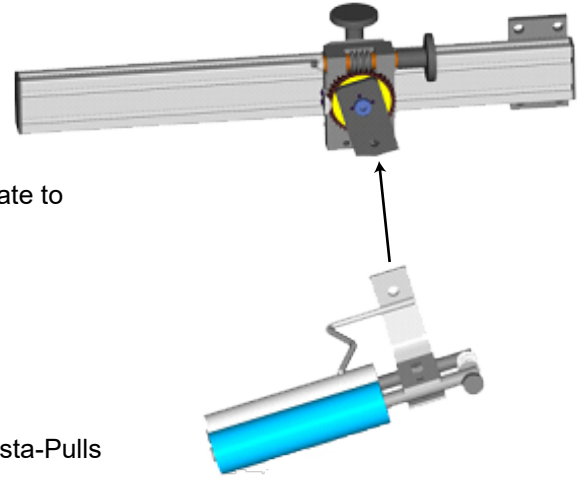


# Mounting Bracket with Angular Adjustment for Adjusta-Pull® Nip Type Anti-Wrinkle System

Converter Accessory Corporation  
www.converteraccessory.com



7.3" from back of mounting plate to web pass-line thru nips

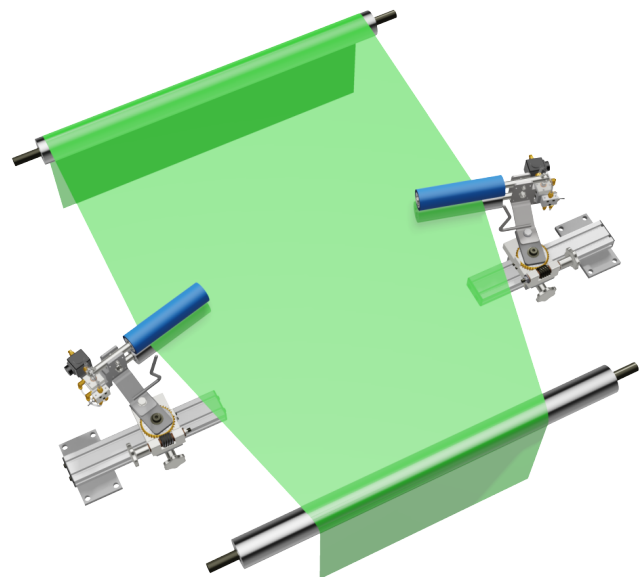


Easily mount your existing Adjusta-Pulls

Part Number	Model Number	Length	Adjustment	Mounting	Appr Weight (pounds)
50959-26	APB12	16"	12"	(4) .562" Clearance holes with 3" x 6" mounting pattern (each side)	12
50959-28	APB18	22"	18"	(4) .562" Clearance holes with 3" x 6" mounting pattern (each side)	13.2
50959-30	APB24	28"	24"	(4) .562" Clearance holes with 3" x 6" mounting pattern (each side)	14.5
50959-31	APB30	34"	30"	(4) .562" Clearance holes with 3" x 6" mounting pattern (each side)	15.5
50959-33	APBSR	Web width + 24.625	Web width as required	(4) .562" Clearance holes with 3" x 6" mounting pattern (each side)	17.5+ .2 per inch of rail

## Adjusta-Pull web spreading concept

When each of the nip assemblies are angled away from each other, each of the web edges will try to maintain a 90 degree entry angle to each nip assembly. This action effectively and aggressively pulls each web edge to spread you we and remove wrinkles. Increasing the angular displacement of each nip assembly increases the web spreading action.



**Converter Accessory Corporation**

201 Alpha Road, PO Box 188, Wind Gap, PA 18091-0188

www.converteraccessory.com  
sales@converteraccessory.com

Phone: 800-433-2413  
610-863-6008

Fax: 800-709-1007  
610-863-7818





# Converter Accessory Corporation

201 Alpha Road, PO Box 188 Wind Gap, PA 18091

[www.converteraccessory.com](http://www.converteraccessory.com)  
Email: [sales@converteraccessory.com](mailto:sales@converteraccessory.com)

Phone: (800) 433-2413  
(610) 863-6008

Fax: (800) 709-1007  
(610) 863-7818

## New Product Announcement FB350 Bowed Roll

**Solutions for the most demanding anti-wrinkle application**



The FB350 bowed roll utilizes fixed bow technology, engineered to fit customers' specific application(s). The fixed bow provides excellent aggressive, repeatable performance for the most demanding anti-wrinkle applications. It is also extremely well suited to separate slit widths for slitter rewriter applications, to prevent interleaving.

CAC's bowed rolls are acceptable for use with textiles, all types of plastic films, paper and non-wovens. They can be used in applications from slow speed to high speed, narrow web to wide web.

### Features and Benefits:

- ◆ Fixed bow amount engineered for your application provides consistent performance
- ◆ Aggressive anti-wrinkle device
- ◆ Perfect for separating slit widths
- ◆ Versatile 3.5" diameter
- ◆ Roll face from 14" to 70" available
- ◆ Optional drive sheave available
- ◆ Various rubber sleeve compounds are available for high heat, chemical exposure and / or adhesive application
- ◆ Excellent, inexpensive spreading device





# Converter Accessory Corporation

201 Alpha Road PO Box 188 Wind Gap, PA 18091

www.converteraccessory.com  
Email: sales@converteraccessory.com

Phone: (800) 433-2413  
(610) 863-6008

Fax: (800) 709-1007  
(610) 863-7818



## Options:

Mounting Brackets

Drive Sheave

## Design Parameters:

Roll face:	14" - 70"
Maximum Speed:	1500 FPM
Maximum Tension:	12 PLI
Minimum Turning Force:	.25 PLI
Weight:	16.85 pounds + .83 pounds per inch of face width
Dead Shaft Construction	
Mounting Block Weight:	4.5 pounds
Typical Bow:	.5% - 3% of roll face

Call our sales engineers today to discuss your application and our complete and unique array of solutions to combat web wrinkles.

**(800) 433-2413**

We provide a variety of anti-wrinkle solutions, such as:

WrinkleSTOP  
Multi-Adjust

Scroll Rolls  
Crowned Rollers



Converter Accessory Corporation  
www.converteraccessory.com

# NEW Adjustable Bowed Roller

## Anti-Wrinkle Spreader Roller



For more information, visit:

[www.converteraccessory.com/products/wrinkle/bowed.php](http://www.converteraccessory.com/products/wrinkle/bowed.php)

### AB350 Bowed Roller with Adjustable Amount of Bow

CAC's NEW AB350 adjustable bowed roller utilizes a unique design, which allows the amount of bow to be adjusted from a minimum of .5% of face width to a maximum of approximately 3% of face width. Bow adjustment is an excellent feature that allows the optimization of anti-wrinkle aggression for any application. This option is a smart choice for applications where materials and web thickness varies.

Adjustable bowed rollers are the best choice for separating slit widths, since the amount of space between each slit may be varied with the amount of bow adjustment. Slit separation is necessary to eliminate interleaving of rewound slit widths.

CAC's AB350 adjustable bowed rollers are acceptable for use with textiles, all types of plastic films, paper and nonwovens. They can be used in applications from slow speed to high speed, narrow web to wide web.

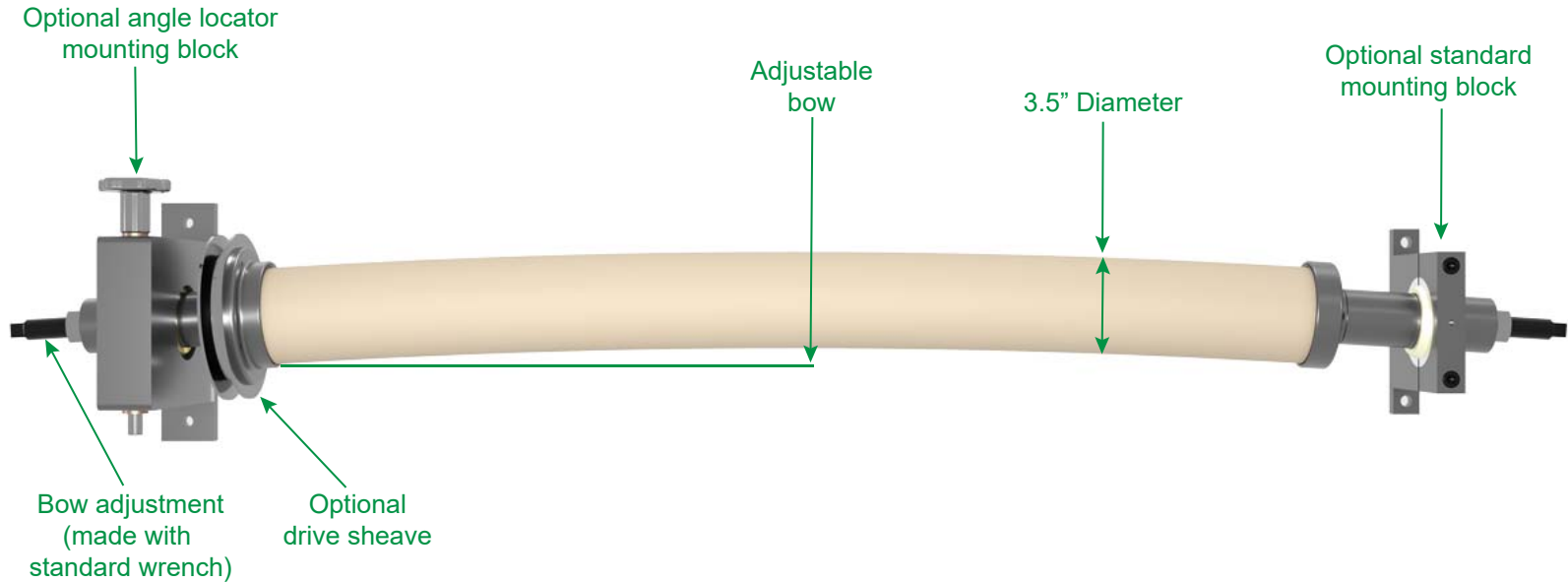
- **Adjustable bow allows adjustment of anti-wrinkle aggression**
- Adjustable bow allows adjustment of web spreading and slit separation
- **Bow adjustment** can be made without stopping the machine, with a standard wrench
- Optional **angle locator mounting block** (pictured) adjusts bow location without stopping the process
- Low maintenance - ball bearing construction
- **Made in the USA**
- **Aggressive anti-wrinkle device**
- Perfect slit separation
- Versatile 3.5" diameter
- Roll face from 14" to 70"
- Web speeds up to 1500 FPM
- Great for paper, film, textiles and nonwovens
- Optional drive sheave for light tension applications
- **Various rubber sleeve compounds available** for high heat, chemical exposure and adhesives



Converter Accessory Corporation  
www.converteraccessory.com

# NEW Adjustable Bowed Roller

## Anti-Wrinkle Spreader Roller



### Options:

- Mounting block
- Angle locator mounting block
- Drive sheave

### Design parameters:

- Roll face: 14 inches to 70 inches
- Maximum speed: 1500 feet per minute
- Maximum tension: 1200 pounds per linear inch
- Minimum tension: .25 pounds per linear inch (without external drive)
- Weight: 17 pounds +1 pound per inch of face width
- Dead shaft construction
- Adjustable bow, on-the-fly, from 0.5% up to approximately 3% of face width



### Converter Accessory Corporation

201 Alpha Road, PO Box 188, Wind Gap, PA 18091-0188

www.converteraccessory.com  
sales@converteraccessory.com

Phone: 800-433-2413  
610-863-6008

Fax: 800-709-1007  
610-863-7818