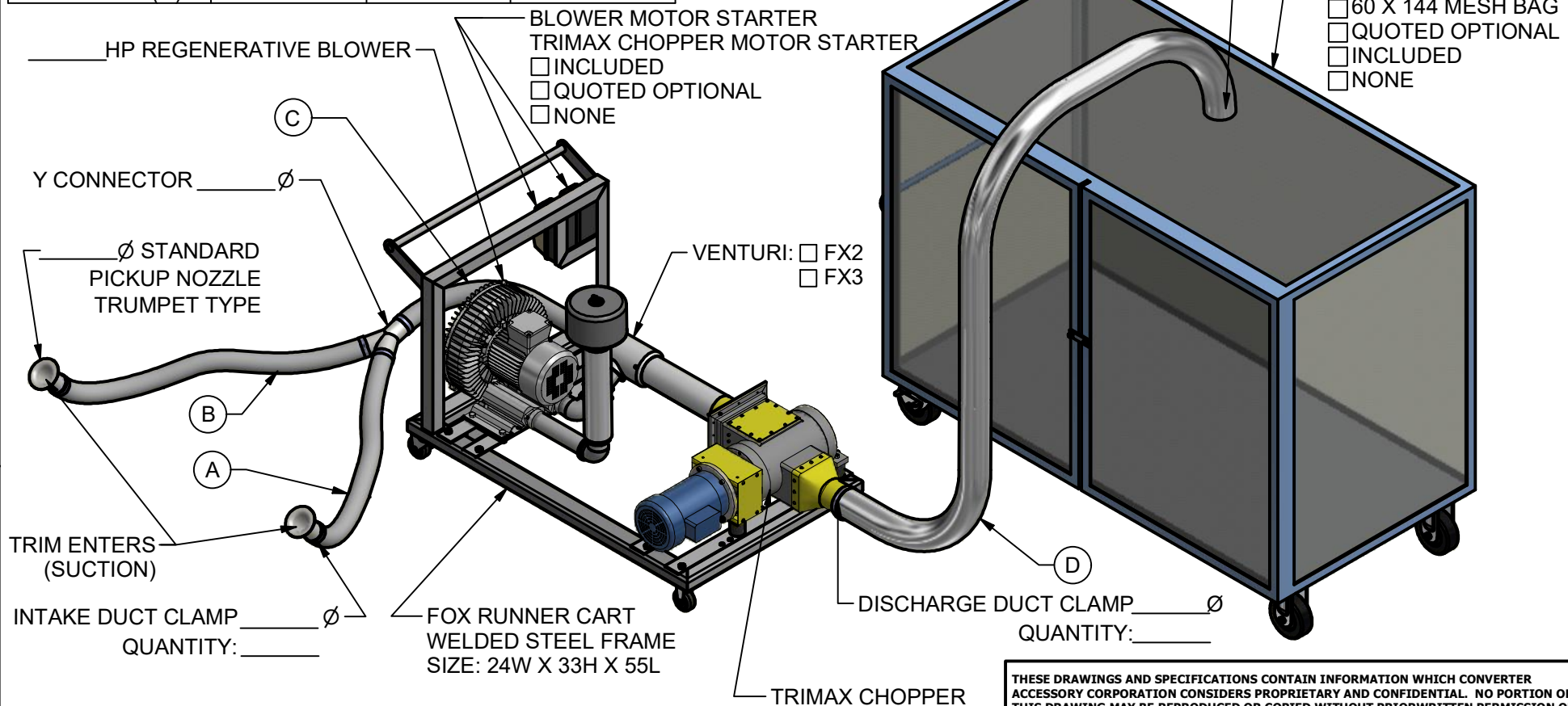


DUCT LENGTHS			
	DIAMETER	LENGTH	# SWEEPS
INTAKE (A)			
INTAKE (B)			
INTAKE (C)			
DISCHARGE (D)			



CUSTOMER: _____

APPROVED BY: _____ DATE: _____

TRIM REMOVAL SPECIFICATIONS:

CONTINUOUS TRIM: ☐ WIDTH: _____

NUMBER OF TRIMS: _____

LOCATION: EDGES: ☐ OTHER: ☐

DESCRIBE: _____

PIECES ☐ DESCRIBE: _____

DID YOU SEND SAMPLES? ☐ YES ☐ NO

NOTES: _____

OPERATING SPECIFICATIONS:

MACHINE: _____

MATERIAL: _____

THICKNESS: MIN. _____ MAX. _____

WIDTH: MIN. _____ MAX. _____

SPEED: MIN. _____ MAX. _____

ELECTRICAL SUPPLY: ☐ 220-275/380-480/3PH/50-60HZ

☐ 110-120/220-240/1PH/50-60HZ

OTHER: _____

AMPS: _____

EXPLOSION PROOF: ☐ YES ☐ NO

THESE DRAWINGS AND SPECIFICATIONS CONTAIN INFORMATION WHICH CONVERTER ACCESSORY CORPORATION CONSIDERS PROPRIETARY AND CONFIDENTIAL. NO PORTION OF THIS DRAWING MAY BE REPRODUCED OR COPIED WITHOUT PRIORWRITTEN PERMISSION OF CONVERTER ACCESSORY CORPORATION.



CONVERTER ACCESSORY CORP.

WIND GAP, PA 18091
WWW.CONVERTERACCESSORY.COM

TITLE			
FOX RUNNER TWO PICKUP WITH TRIMAX CHOPPER			
SIZE	DWG NO	REV	
A	18503-234	A	
DATE	DRAWN	FILE	QUOTE NO.
		MEMAST	