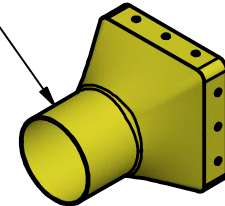
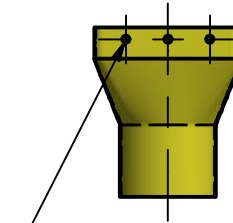
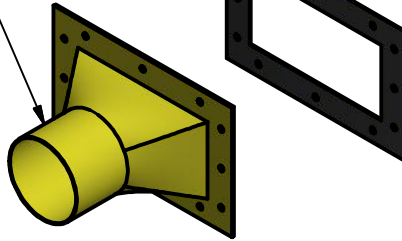
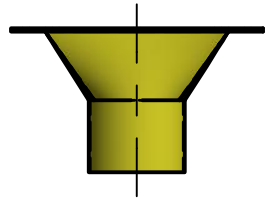


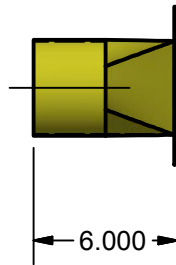
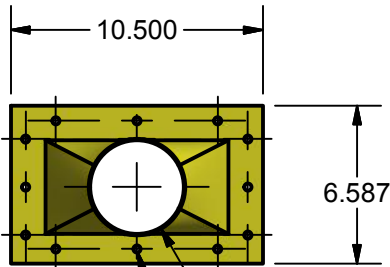
4"Ø INLET TRANSITION  
PART#40511-36  
FOR TRIMAX CHOPPER

INTAKE TRANSITION  
SEAL GASKET  
PART#40511-43

4"Ø DISCHARGE TRANSITION  
PART#40511-37  
FOR TRIMAX CHOPPER

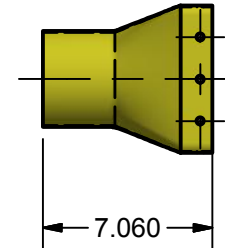
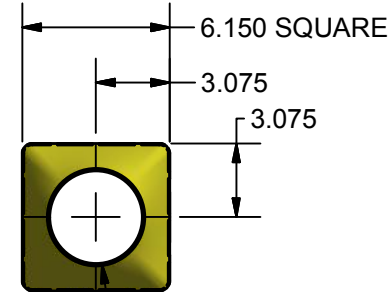


Ø.281 MOUNTING HOLES (12)



Ø4.000 O.D.

Ø.281 MOUNTING HOLES (12)



Ø4.000 O.D.

THESE DRAWINGS AND SPECIFICATIONS CONTAIN INFORMATION WHICH CONVERTER ACCESSORY CORPORATION CONSIDERS PROPRIETARY AND CONFIDENTIAL. NO PORTION OF THIS DRAWING MAY BE REPRODUCED OR COPIED WITHOUT PRIORWRITTEN PERMISSION OF CONVERTER ACCESSORY CORPORATION.



CONVERTER ACCESSORY CORP.

WIND GAP, PA 18091  
WWW.CONVERTERACCESSORY.COM

TITLE

TRIMAX CHOPPER 4"DIAMETER  
INLET & DISCHARGE TRANSITION KIT

SIZE

A

DWG NO

18503-291

REV

DATE

DRAWN

FILE

MEMAST

QUOTE NO.

CUSTOMER:

APPROVED BY: \_\_\_\_\_

DATE: \_\_\_\_\_

Notes: