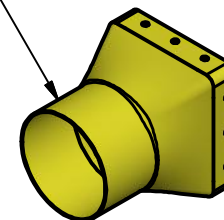
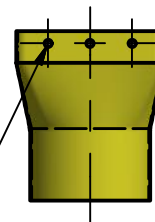
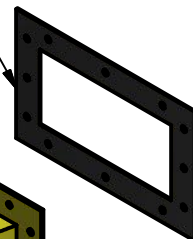
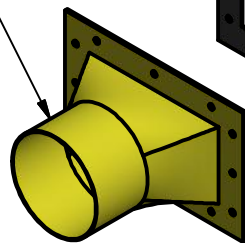
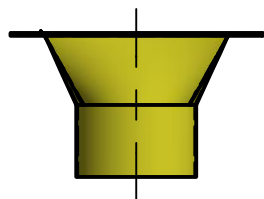


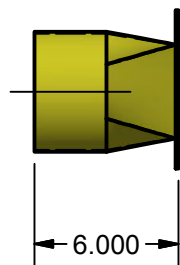
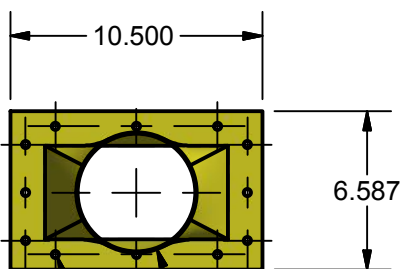
5"Ø INLET TRANSITION
PART#40511-25
FOR TRIMAX CHOPPER

INTAKE TRANSITION
SEAL GASKET
PART#40511-43

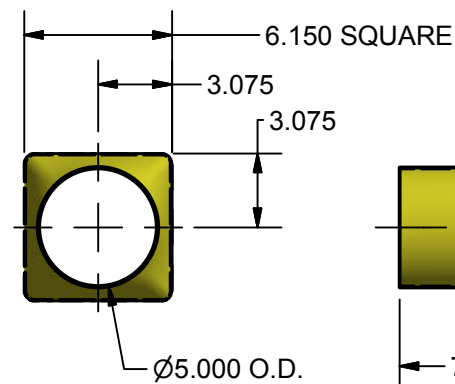
5"Ø DISCHARGE TRANSITION
PART#40511-23A
FOR TRIMAX CHOPPER



Ø.281 MOUNTING HOLES (12)



Ø.281 MOUNTING HOLES (12)



THESE DRAWINGS AND SPECIFICATIONS CONTAIN INFORMATION WHICH CONVERTER ACCESSORY CORPORATION CONSIDERS PROPRIETARY AND CONFIDENTIAL. NO PORTION OF THIS DRAWING MAY BE REPRODUCED OR COPIED WITHOUT PRIORWRITTEN PERMISSION OF CONVERTER ACCESSORY CORPORATION.



CONVERTER ACCESSORY CORP.

WIND GAP, PA 18091
WWW.CONVERTERACCESSORY.COM

TITLE

TRIMAX CHOPPER 5"DIAMETER
INLET & DISCHARGE TRANSITION KIT

SIZE

A

DWG NO

18503-292

REV

DATE

DRAWN

FILE

MEMAST

QUOTE NO.

CUSTOMER:
APPROVED BY:
Notes:

DATE: