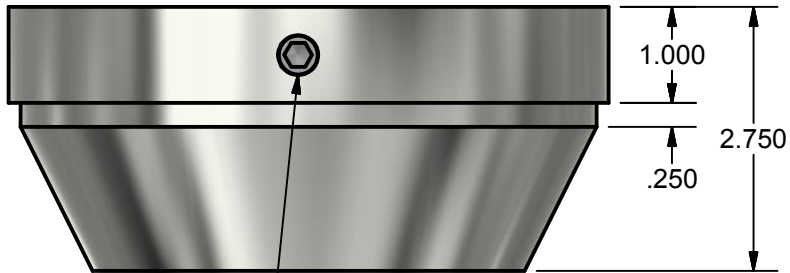
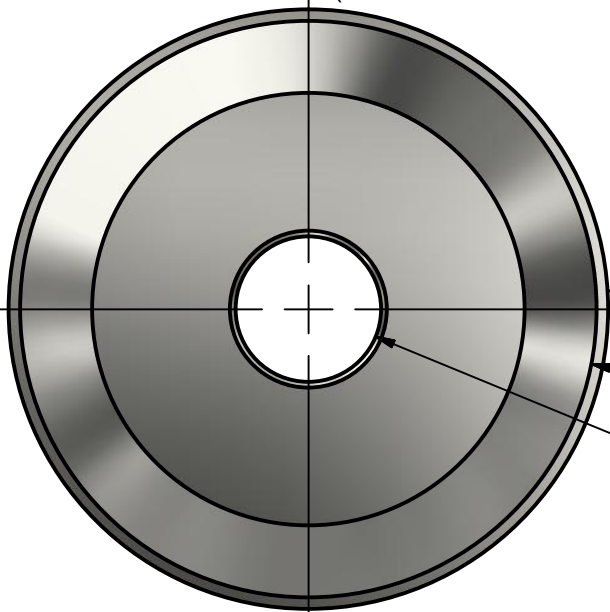


SPLIT BUSHING
(LOCKS TO THRU SHAFT)



1/2-13 SOCKET SET SCREW
(SPLIT BUSHING LOCKING SCREW)



Ø6.250 O.D. CORE STOP

Ø6.000

Ø4.000 MAXIMUM THRU BORE

NOTE:
THRU BORE MACHINED .010-.015 OVERSIZE
UNLESS OTHERWISE SPECIFIED.

CUSTOMER: _____

APPROVED BY: _____

DATE: _____

MATERIAL: ☐ ALUMINUM ☐ OTHER _____

OPERATING SPECIFICATIONS:

MACHINE: _____

MATERIAL: _____

THICKNESS: MIN. _____ MAX. _____

WIDTH: MIN. _____ MAX. _____

SPEED: MIN. _____ MAX. _____

TENSION: MIN. _____ MAX. _____

CORE DIA.: _____

CORE MATERIAL: _____

MAX. ROLL DIA.: _____

MAX. ROLL WEIGHT: _____

☐ UNWIND ☐ REWIND

☐ SINGLE WIDTH ☐ SLIT WIDTHS

☐ ROUND THRU BORE: _____

☐ SQUARE THRU BORE: _____

QUANTITY REQUIRED: _____

NOTES: _____

THESE DRAWINGS AND SPECIFICATIONS CONTAIN INFORMATION WHICH
CONVERTER ACCESSORY CORPORATION CONSIDERS PROPRIETARY AND CONFIDENTIAL.
NO PORTION OF THIS DRAWING MAY BE REPRODUCED OR COPIED WITHOUT PRIOR
WRITTEN PERMISSION OF CONVERTER ACCESSORY CORPORATION.



CONVERTER ACCESSORY CORP.

WIND GAP, PA 18091

WWW.CONVERTERACCESSORY.COM

TITLE

6 INCH END PLUG

SIZE

A

DWG NO

18503-343

REV

DATE

DRAWN

FILE

MEMAST

QUOTE NO.

2

1