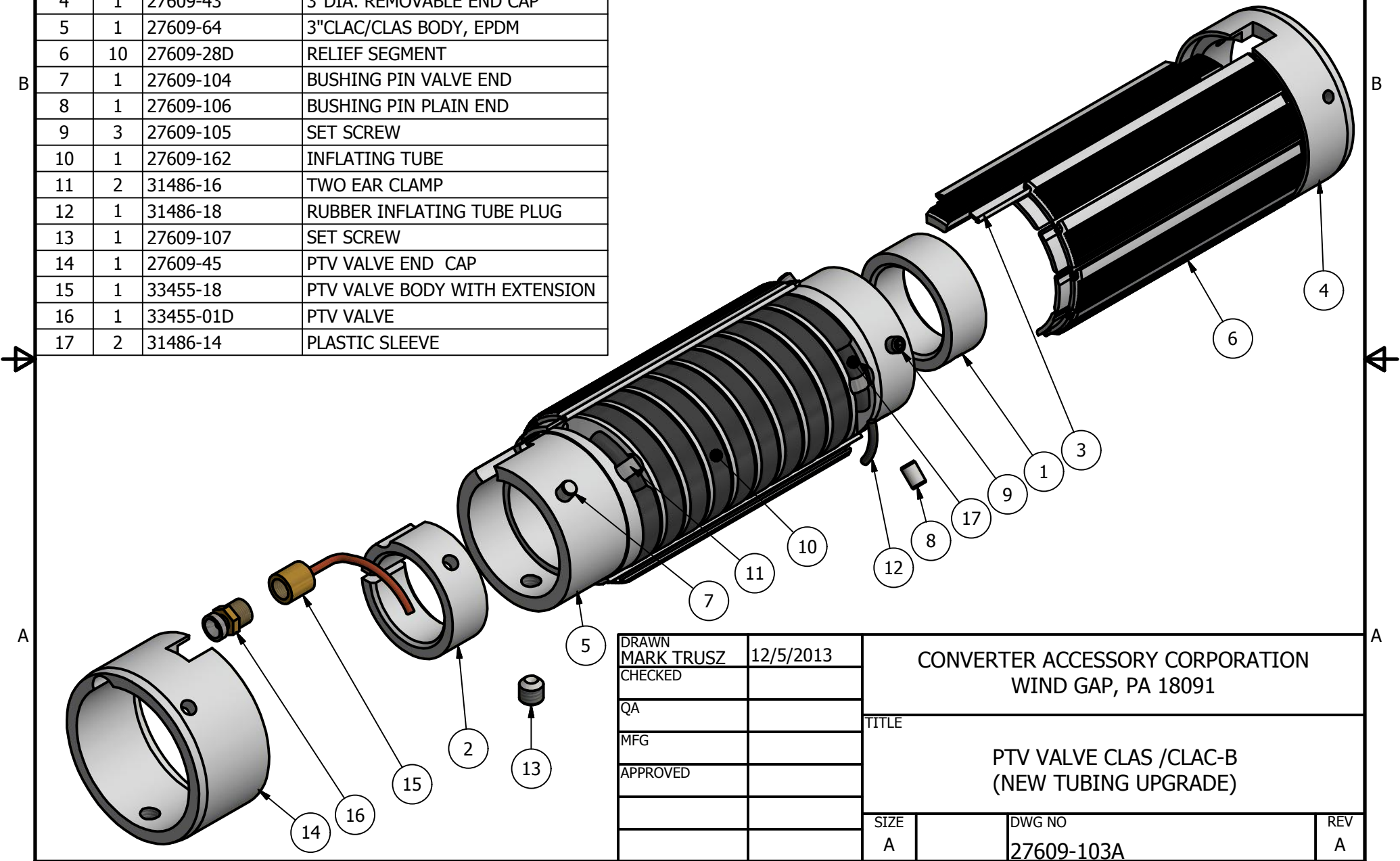


2

1

PARTS LIST			
ITEM	QTY	PART NUMBER	DESCRIPTION
1	1	27609-20B	PLAIN BUSHING
2	1	27609-21B	SPLIT BUSHING
3	1	27609-29E	LOCKING SEGMENT
4	1	27609-43	3"DIA. REMOVABLE END CAP
5	1	27609-64	3"CLAC/CLAS BODY, EPDM
6	10	27609-28D	RELIEF SEGMENT
7	1	27609-104	BUSHING PIN VALVE END
8	1	27609-106	BUSHING PIN PLAIN END
9	3	27609-105	SET SCREW
10	1	27609-162	INFLATING TUBE
11	2	31486-16	TWO EAR CLAMP
12	1	31486-18	RUBBER INFLATING TUBE PLUG
13	1	27609-107	SET SCREW
14	1	27609-45	PTV VALVE END CAP
15	1	33455-18	PTV VALVE BODY WITH EXTENSION
16	1	33455-01D	PTV VALVE
17	2	31486-14	PLASTIC SLEEVE

REVISION HISTORY				
ZONE	REV	DESCRIPTION	DATE	APPROVED
2B	A	INFLATING TUBE PART# WAS 27609-95B	5/16/17	MJT



DRAWN	MARK TRUSZ	12/5/2013
CHECKED		
QA		
MFG		
APPROVED		

CONVERTER ACCESSORY CORPORATION WIND GAP, PA 18091		
TITLE PTV VALVE CLAS /CLAC-B (NEW TUBING UPGRADE)		
SIZE A	DWG NO 27609-103A	REV A

2

1