

2

1

PARTS LIST			
ITEM	QTY	PART NUMBER	DESCRIPTION
1	1	27609-20B	PLAIN BUSHING
2	1	27609-21B	SPLIT BUSHING
3	1	27609-29E	LOCKING SEGMENT
4	1	27609-43	3"DIA. REMOVABLE END CAP
5	1	27609-125	3"CLAC/CLAS-B2 BODY, SCHRADER VALVE
6	10	27609-28D	RELIEF SEGMENT
7	1	27609-104	BUSHING PIN VALVE END
8	1	27609-106	BUSHING PIN PLAIN END
9	3	27609-105	SET SCREW
10	1	27609-162	INFLATING TUBE
11	2	27609-90D	TAB CLAMP
12	2	27609-101C	CAP SCREW
13	1	31486-26	VALVE BODY WITH EXTENSION
14	1	31486-18	RUBBER INFLATING TUBE PLUG
15	1	27609-107	SET SCREW
16	1	27609-01D	VALVE END CAP
17	1	31486-30	SCHRADER VALVE CORE

REVISION HISTORY				
ZONE	REV	DESCRIPTION	DATE	APPROVED
2B	A	INFLATING TUBE PART# WAS 27609-95B CAP SCREW PART # WAS 27609-101B REMOVED HELICAL INSERT PART#27609-94	5-16-17	MJT

B

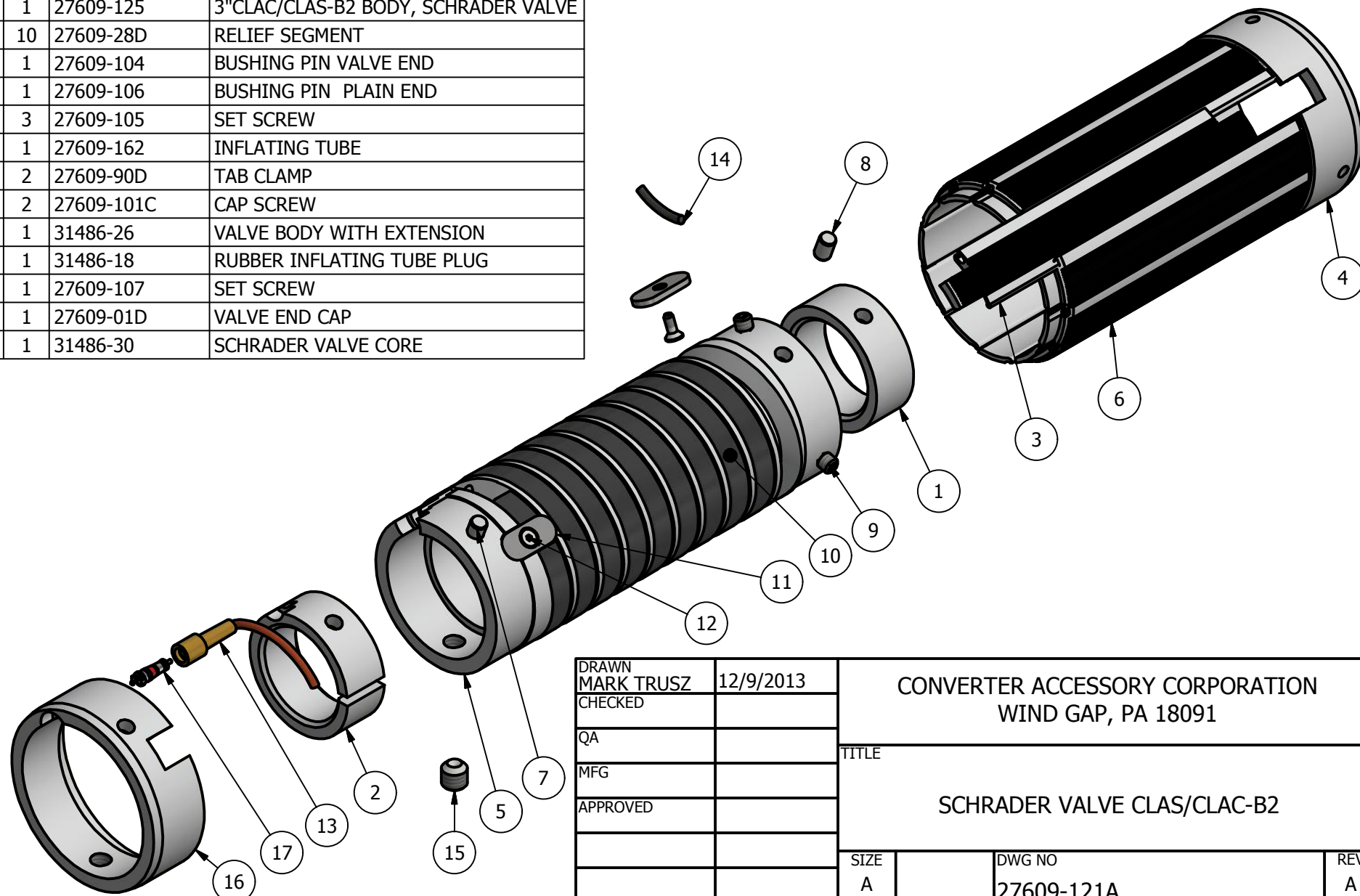
B

A

A

A

A



DRAWN MARK TRUSZ CHECKED QA MFG APPROVED	12/9/2013 	CONVERTER ACCESSORY CORPORATION WIND GAP, PA 18091	
		TITLE SCHRADER VALVE CLAS/CLAC-B2	
		SIZE A	DWG NO 27609-121A
			REV A

2

1

